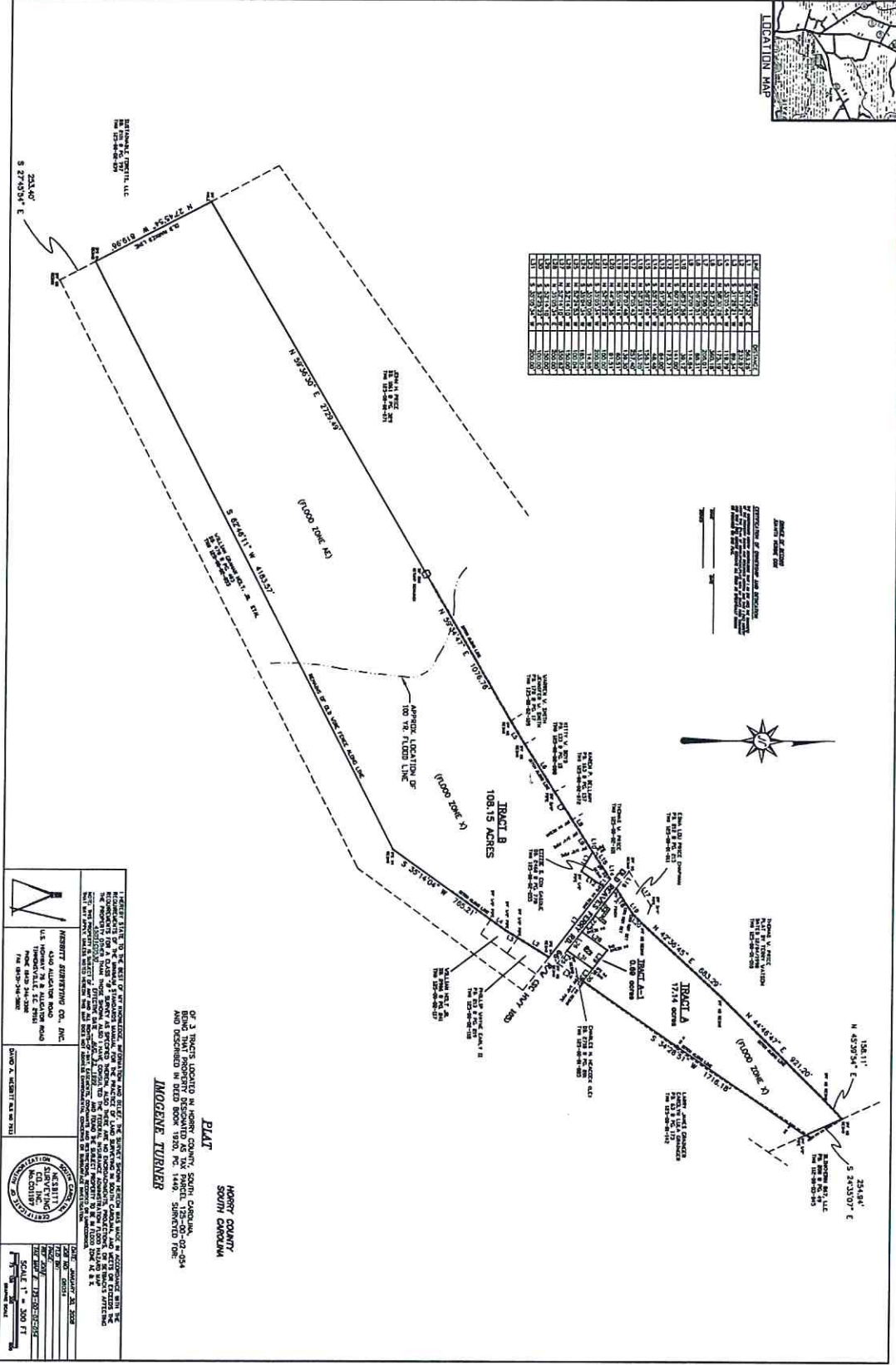


TRACT	AREA (ACRES)	PERCENTAGE OF TOTAL AREA
TRACT A	17.14	15.82%
TRACT B	108.15	100.00%
TRACT C	0.00	0.00%
TRACT D	0.00	0.00%
TRACT E	0.00	0.00%
TRACT F	0.00	0.00%
TRACT G	0.00	0.00%
TRACT H	0.00	0.00%
TRACT I	0.00	0.00%
TRACT J	0.00	0.00%
TRACT K	0.00	0.00%
TRACT L	0.00	0.00%
TRACT M	0.00	0.00%
TRACT N	0.00	0.00%
TRACT O	0.00	0.00%
TRACT P	0.00	0.00%
TRACT Q	0.00	0.00%
TRACT R	0.00	0.00%
TRACT S	0.00	0.00%
TRACT T	0.00	0.00%
TRACT U	0.00	0.00%
TRACT V	0.00	0.00%
TRACT W	0.00	0.00%
TRACT X	0.00	0.00%
TRACT Y	0.00	0.00%
TRACT Z	0.00	0.00%
TOTAL	125.29	115.82%



PREPARED BY: **INGENIUM ENGINEERING, LLC**  
 1000 W. HARRIS BLVD., SUITE 100  
 WASHINGTON, DC 20005  
 TEL: (202) 462-1000  
 FAX: (202) 462-1001  
 WWW.INGENIUM-ENGINEERING.COM

PROJECT: **PLAT OF 3 TRACTS LOCATED IN HOBBS COUNTY, SOUTH CAROLINA, BEING THAT PROPERTY RESUBDIVIDED AS TWO PARCELS, 725-00-02-054 AND DESIGNATED IN DEED BOOK 1920, PG. 1449, SHERFIELD FORD, **INGEGNE TURNER****

DATE: **APRIL 21, 2021**  
 SCALE: **1" = 300 FT**

ALSO AUTION ROAD  
 U.S. HIGHWAY 16, E.C. 788  
 AND 400 348-300  
 IN 2019-2020

**INGENIUM ENGINEERING, LLC, INC.**  
 1000 W. HARRIS BLVD., SUITE 100  
 WASHINGTON, DC 20005  
 TEL: (202) 462-1000  
 FAX: (202) 462-1001  
 WWW.INGENIUM-ENGINEERING.COM

**PLAT**  
**HOBBS COUNTY**  
**SOUTH CAROLINA**

**725-00-02-054**  
**AND DESIGNATED IN DEED BOOK 1920, PG. 1449, SHERFIELD FORD, **INGEGNE TURNER****