

29/234



FAIRFIELDS SECTION 5

OWNER: HIGH ACRE DEVELOPMENT, CORP.
SOURCE: DB 379 PG 265
TOTAL AREA: 115.079 ACRES

This plat was recorded in public records and, upon the expiration of the term of the same, submitted to record at 11:00 o'clock

Taxic: *John D. Clark*

GARNETT E. & FLORENCE E. COLEMAN
DB 323 PG 75
233-34-502-484.75

REVISED JULY 22, 1993
This is to certify that an accurate and correct plat of the subdivision shown herein and the same is in accordance with the laws of the Commonwealth of Virginia and the provisions of the same.

APPROVED JAN 2 5 1993
By: *[Signature]*
Bedford County Subdivision Agent

NOTE: THIS ROAD IS NOT TO BE MAINTAINED BY THE STATE OF VIRGINIA AT ALL CORNERS UNLESS OTHERWISE NOTED.
NOTE: ALL ROAD RIGHTS ALONG 50' PRIVATE STREET ARE SET BY THE RIGHT OF WAY OF THE 50' PRIVATE STREET.

[Signature]
Surveyor

Surveyor's Certificate

By: *[Signature]*
Notary Public

Building setback

The owner of the subdivision does not intend to construct a public water or sewer system...

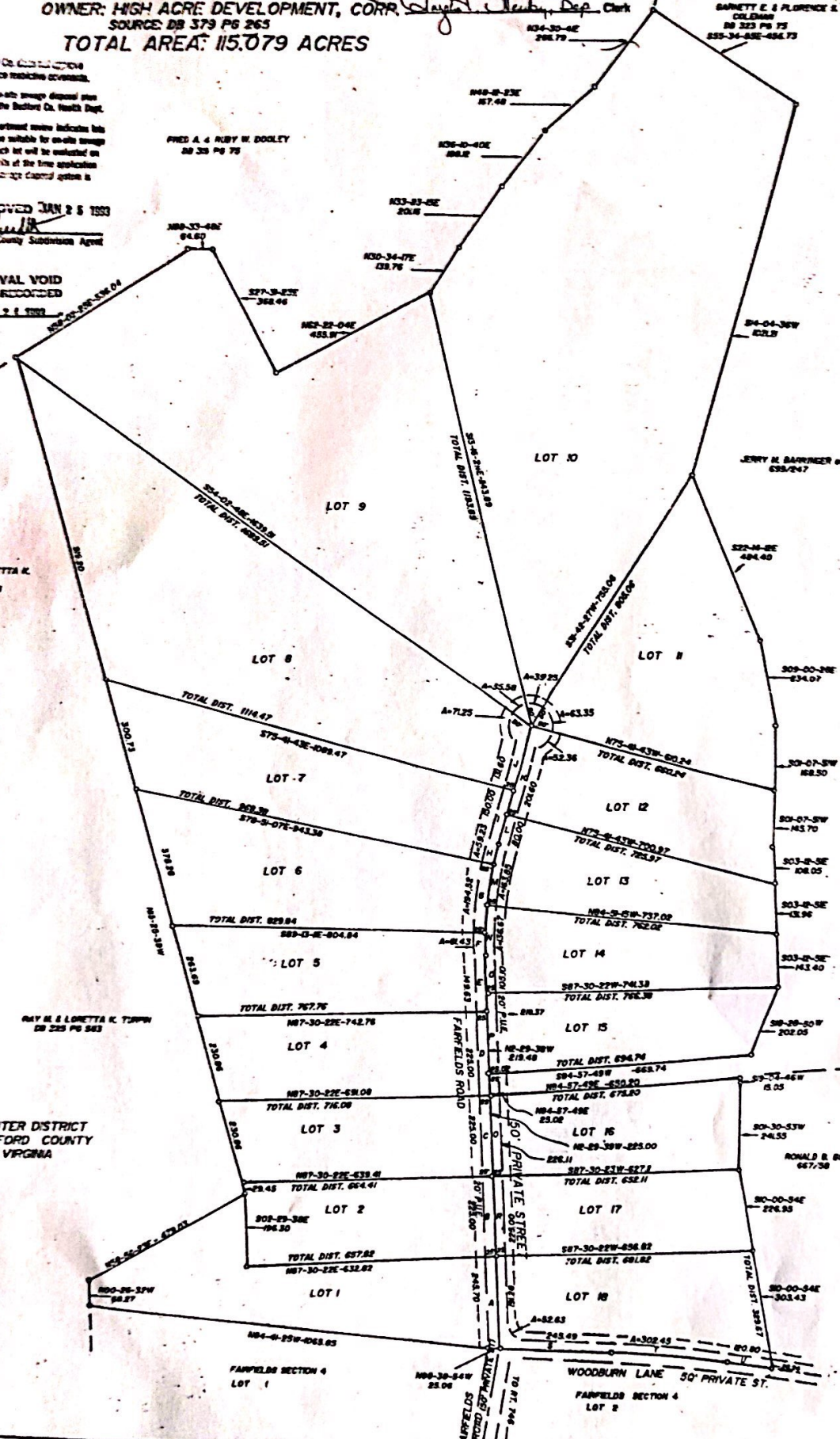
The property as platted does not fall within the Flood Insurance Rate Map...

ROAD	CHART	CHART
00-00-01	000.00	00.00
00-00-02	000.00	00.00
00-00-03	000.00	00.00
00-00-04	000.00	00.00
00-00-05	000.00	00.00
00-00-06	000.00	00.00
00-00-07	000.00	00.00
00-00-08	000.00	00.00
00-00-09	000.00	00.00
00-00-10	000.00	00.00
00-00-11	000.00	00.00
00-00-12	000.00	00.00
00-00-13	000.00	00.00
00-00-14	000.00	00.00
00-00-15	000.00	00.00
00-00-16	000.00	00.00
00-00-17	000.00	00.00
00-00-18	000.00	00.00
00-00-19	000.00	00.00
00-00-20	000.00	00.00
00-00-21	000.00	00.00
00-00-22	000.00	00.00
00-00-23	000.00	00.00
00-00-24	000.00	00.00
00-00-25	000.00	00.00
00-00-26	000.00	00.00
00-00-27	000.00	00.00
00-00-28	000.00	00.00
00-00-29	000.00	00.00
00-00-30	000.00	00.00
00-00-31	000.00	00.00
00-00-32	000.00	00.00
00-00-33	000.00	00.00
00-00-34	000.00	00.00
00-00-35	000.00	00.00
00-00-36	000.00	00.00
00-00-37	000.00	00.00
00-00-38	000.00	00.00
00-00-39	000.00	00.00
00-00-40	000.00	00.00
00-00-41	000.00	00.00
00-00-42	000.00	00.00
00-00-43	000.00	00.00
00-00-44	000.00	00.00
00-00-45	000.00	00.00
00-00-46	000.00	00.00
00-00-47	000.00	00.00
00-00-48	000.00	00.00
00-00-49	000.00	00.00
00-00-50	000.00	00.00
00-00-51	000.00	00.00
00-00-52	000.00	00.00
00-00-53	000.00	00.00
00-00-54	000.00	00.00
00-00-55	000.00	00.00
00-00-56	000.00	00.00
00-00-57	000.00	00.00
00-00-58	000.00	00.00
00-00-59	000.00	00.00
00-00-60	000.00	00.00
00-00-61	000.00	00.00
00-00-62	000.00	00.00
00-00-63	000.00	00.00
00-00-64	000.00	00.00
00-00-65	000.00	00.00
00-00-66	000.00	00.00
00-00-67	000.00	00.00
00-00-68	000.00	00.00
00-00-69	000.00	00.00
00-00-70	000.00	00.00
00-00-71	000.00	00.00
00-00-72	000.00	00.00
00-00-73	000.00	00.00
00-00-74	000.00	00.00
00-00-75	000.00	00.00
00-00-76	000.00	00.00
00-00-77	000.00	00.00
00-00-78	000.00	00.00
00-00-79	000.00	00.00
00-00-80	000.00	00.00
00-00-81	000.00	00.00
00-00-82	000.00	00.00
00-00-83	000.00	00.00
00-00-84	000.00	00.00
00-00-85	000.00	00.00
00-00-86	000.00	00.00
00-00-87	000.00	00.00
00-00-88	000.00	00.00
00-00-89	000.00	00.00
00-00-90	000.00	00.00
00-00-91	000.00	00.00
00-00-92	000.00	00.00
00-00-93	000.00	00.00
00-00-94	000.00	00.00
00-00-95	000.00	00.00
00-00-96	000.00	00.00
00-00-97	000.00	00.00
00-00-98	000.00	00.00
00-00-99	000.00	00.00
00-00-100	000.00	00.00

LOT	AREA	CHART	TOTAL AREA
1	4.880 AC.	0.00 AC.	4.880 ACRES
2	1.270 AC.	0.00 AC.	1.270 ACRES
3	1.700 AC.	0.00 AC.	1.700 ACRES
4	1.430 AC.	0.00 AC.	1.430 ACRES
5	0.430 AC.	0.00 AC.	0.430 ACRES
6	0.720 AC.	0.00 AC.	0.720 ACRES
7	0.940 AC.	0.00 AC.	0.940 ACRES
8	0.820 AC.	0.00 AC.	0.820 ACRES
9	0.820 AC.	0.00 AC.	0.820 ACRES
10	1.720 AC.	0.00 AC.	1.720 ACRES
11	1.270 AC.	0.00 AC.	1.270 ACRES
12	1.270 AC.	0.00 AC.	1.270 ACRES
13	1.270 AC.	0.00 AC.	1.270 ACRES
14	1.270 AC.	0.00 AC.	1.270 ACRES
15	1.270 AC.	0.00 AC.	1.270 ACRES
16	1.270 AC.	0.00 AC.	1.270 ACRES
17	1.270 AC.	0.00 AC.	1.270 ACRES
18	1.270 AC.	0.00 AC.	1.270 ACRES
19	1.270 AC.	0.00 AC.	1.270 ACRES
20	1.270 AC.	0.00 AC.	1.270 ACRES
21	1.270 AC.	0.00 AC.	1.270 ACRES
22	1.270 AC.	0.00 AC.	1.270 ACRES
23	1.270 AC.	0.00 AC.	1.270 ACRES
24	1.270 AC.	0.00 AC.	1.270 ACRES
25	1.270 AC.	0.00 AC.	1.270 ACRES
26	1.270 AC.	0.00 AC.	1.270 ACRES
27	1.270 AC.	0.00 AC.	1.270 ACRES
28	1.270 AC.	0.00 AC.	1.270 ACRES
29	1.270 AC.	0.00 AC.	1.270 ACRES
30	1.270 AC.	0.00 AC.	1.270 ACRES
31	1.270 AC.	0.00 AC.	1.270 ACRES
32	1.270 AC.	0.00 AC.	1.270 ACRES
33	1.270 AC.	0.00 AC.	1.270 ACRES
34	1.270 AC.	0.00 AC.	1.270 ACRES
35	1.270 AC.	0.00 AC.	1.270 ACRES
36	1.270 AC.	0.00 AC.	1.270 ACRES
37	1.270 AC.	0.00 AC.	1.270 ACRES
38	1.270 AC.	0.00 AC.	1.270 ACRES
39	1.270 AC.	0.00 AC.	1.270 ACRES
40	1.270 AC.	0.00 AC.	1.270 ACRES
41	1.270 AC.	0.00 AC.	1.270 ACRES
42	1.270 AC.	0.00 AC.	1.270 ACRES
43	1.270 AC.	0.00 AC.	1.270 ACRES
44	1.270 AC.	0.00 AC.	1.270 ACRES
45	1.270 AC.	0.00 AC.	1.270 ACRES
46	1.270 AC.	0.00 AC.	1.270 ACRES
47	1.270 AC.	0.00 AC.	1.270 ACRES
48	1.270 AC.	0.00 AC.	1.270 ACRES
49	1.270 AC.	0.00 AC.	1.270 ACRES
50	1.270 AC.	0.00 AC.	1.270 ACRES
51	1.270 AC.	0.00 AC.	1.270 ACRES
52	1.270 AC.	0.00 AC.	1.270 ACRES
53	1.270 AC.	0.00 AC.	1.270 ACRES
54	1.270 AC.	0.00 AC.	1.270 ACRES
55	1.270 AC.	0.00 AC.	1.270 ACRES
56	1.270 AC.	0.00 AC.	1.270 ACRES
57	1.270 AC.	0.00 AC.	1.270 ACRES
58	1.270 AC.	0.00 AC.	1.270 ACRES
59	1.270 AC.	0.00 AC.	1.270 ACRES
60	1.270 AC.	0.00 AC.	1.270 ACRES
61	1.270 AC.	0.00 AC.	1.270 ACRES
62	1.270 AC.	0.00 AC.	1.270 ACRES
63	1.270 AC.	0.00 AC.	1.270 ACRES
64	1.270 AC.	0.00 AC.	1.270 ACRES
65	1.270 AC.	0.00 AC.	1.270 ACRES
66	1.270 AC.	0.00 AC.	1.270 ACRES
67	1.270 AC.	0.00 AC.	1.270 ACRES
68	1.270 AC.	0.00 AC.	1.270 ACRES
69	1.270 AC.	0.00 AC.	1.270 ACRES
70	1.270 AC.	0.00 AC.	1.270 ACRES
71	1.270 AC.	0.00 AC.	1.270 ACRES
72	1.270 AC.	0.00 AC.	1.270 ACRES
73	1.270 AC.	0.00 AC.	1.270 ACRES
74	1.270 AC.	0.00 AC.	1.270 ACRES
75	1.270 AC.	0.00 AC.	1.270 ACRES
76	1.270 AC.	0.00 AC.	1.270 ACRES
77	1.270 AC.	0.00 AC.	1.270 ACRES
78	1.270 AC.	0.00 AC.	1.270 ACRES
79	1.270 AC.	0.00 AC.	1.270 ACRES
80	1.270 AC.	0.00 AC.	1.270 ACRES
81	1.270 AC.	0.00 AC.	1.270 ACRES
82	1.270 AC.	0.00 AC.	1.270 ACRES
83	1.270 AC.	0.00 AC.	1.270 ACRES
84	1.270 AC.	0.00 AC.	1.270 ACRES
85	1.270 AC.	0.00 AC.	1.270 ACRES
86	1.270 AC.	0.00 AC.	1.270 ACRES
87	1.270 AC.	0.00 AC.	1.270 ACRES
88	1.270 AC.	0.00 AC.	1.270 ACRES
89	1.270 AC.	0.00 AC.	1.270 ACRES
90	1.270 AC.	0.00 AC.	1.270 ACRES
91	1.270 AC.	0.00 AC.	1.270 ACRES
92	1.270 AC.	0.00 AC.	1.270 ACRES
93	1.270 AC.	0.00 AC.	1.270 ACRES
94	1.270 AC.	0.00 AC.	1.270 ACRES
95	1.270 AC.	0.00 AC.	1.270 ACRES
96	1.270 AC.	0.00 AC.	1.270 ACRES
97	1.270 AC.	0.00 AC.	1.270 ACRES
98	1.270 AC.	0.00 AC.	1.270 ACRES
99	1.270 AC.	0.00 AC.	1.270 ACRES
100	1.270 AC.	0.00 AC.	1.270 ACRES



CENTER DISTRICT
BEDFORD COUNTY
VIRGINIA



MAGNETIC NORTH ARROW IN 1989
SCALE 1" = 300' FB 176 PG 25
COUNTY NO. 5028