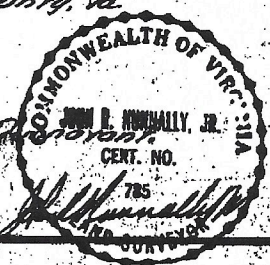


Fed contract between E. Glenn Dunnington, et al and Ronald J. Plimmory, et al see Sub Book 152 page 450.

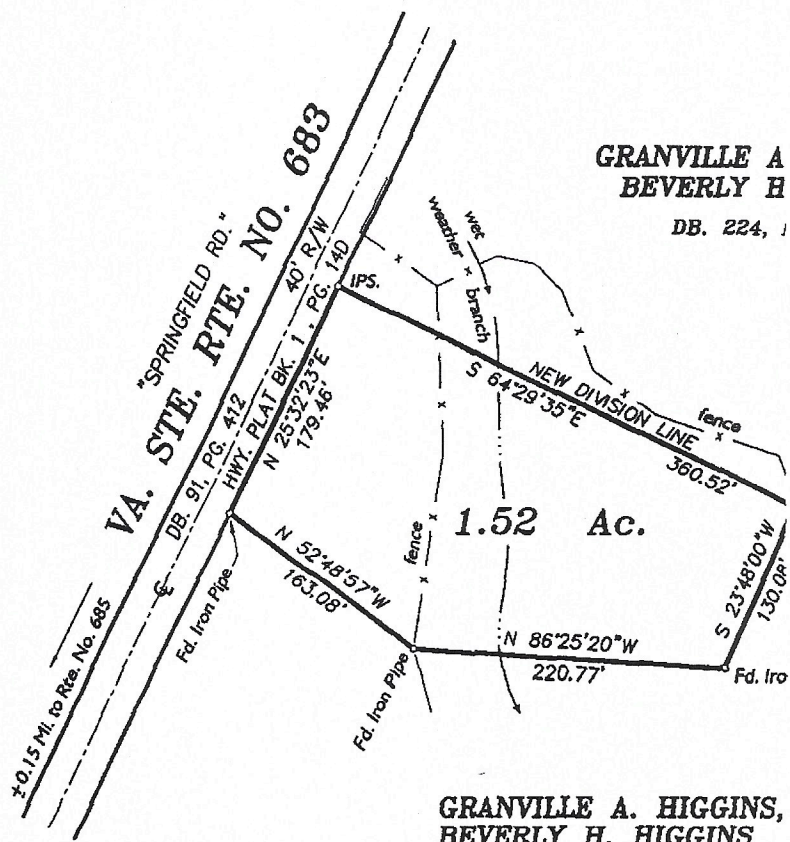
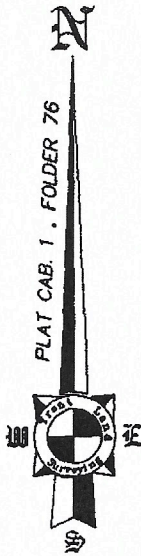
Boundary plot of two tracts of land in Pleasant Grove District, Lunenburg County, Va.
 Tract 1, 22.58 acres.
 Tract 2, 6.69 acres.
 Total 29.27 acres.

Surveyed for E. Glenn Dunnington, et al.
 Scale: 1 in. = 200 ft.
 May 7, 1902
 June 21, 1902
 Sept. 29, 1902



13698102
 1-76

#675



GRANVILLE A
BEVERLY H

DB. 224, 1

GRANVILLE A. HIGGINS,
BEVERLY H. HIGGINS

DB. 237, PG. 25 - #2
PLAT CAB. 1, FOLDER 76

PLAT OF A PARCEL OF LAND CONTAINING 1.
BEING A PORTION OF THAT PROPERTY CONV
GRANVILLE A. HIGGINS, JR. and BEVERLY H.
IN DEED BOOK 224, PAGE 561; AND LOCATE
PLEASANT GROVE MAGISTERIAL DISTRICT OF
LUNENBURG COUNTY, VIRGINIA.

DATE: APRIL 4, 2005

SCALE: 1" = 100'

FILE: 01505.dwg

Plat Recorded April 27, 2005 Plat Cabinet 4, Folder