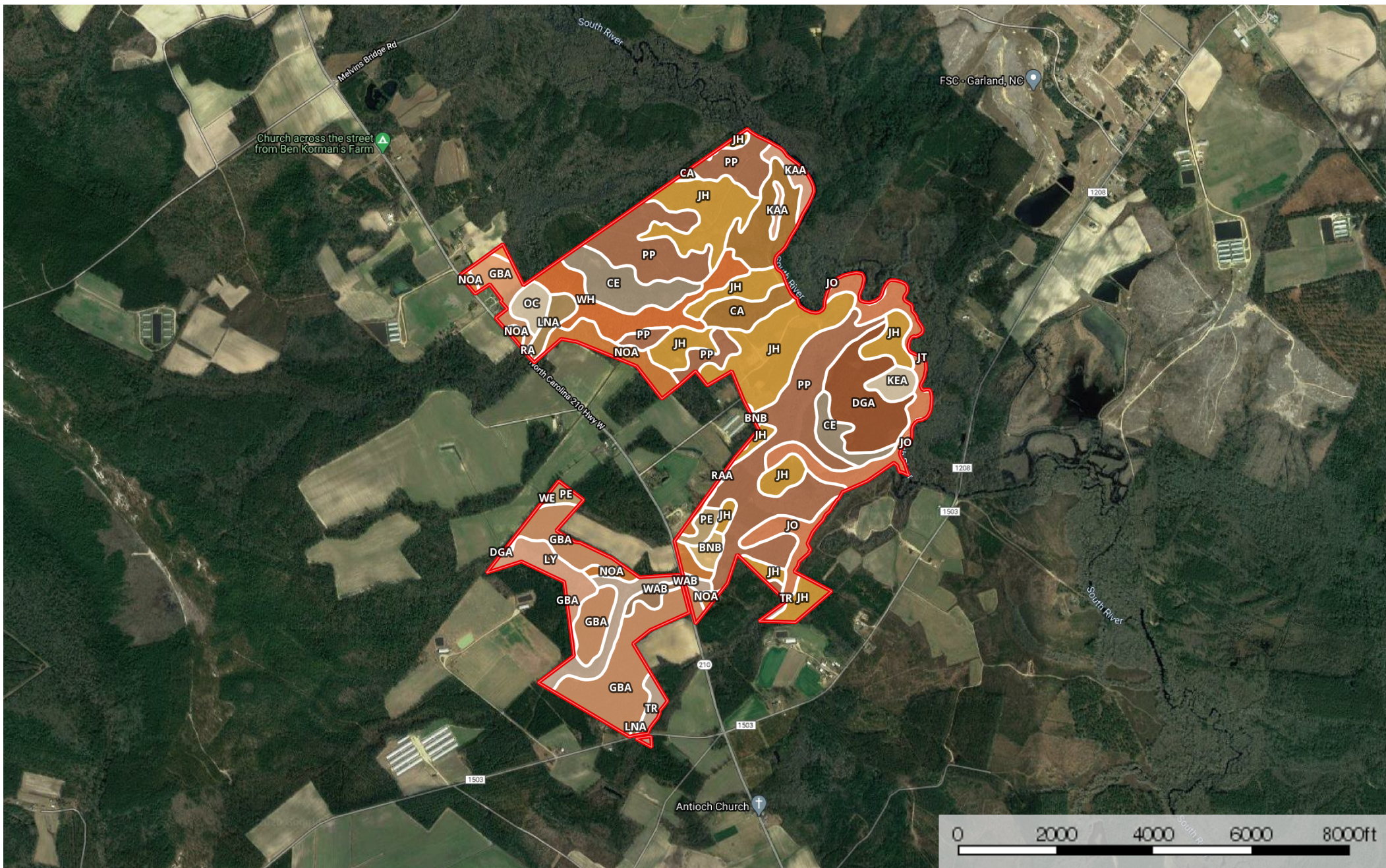



744.83 ac Skinner Bladen BC

Bladen County, North Carolina, 744.83 AC +/-



 Boundary

|  All Polygons 732.5 ac

SOIL CODE	SOIL DESCRIPTION	ACRES	%	CAP
Jo	Johns fine sandy loam	0.4	0.05	2w
JT	Johnston mucky loam	0.4	0.06	7w
KeA	Kenansville sand, 0 to 3 percent slopes	7.7	1.05	2s
Jh	Johns fine sandy loam	143.5	19.58	2w
DgA	Dogue sandy loam, 0 to 3 percent slopes	40.3	5.5	2w
Ce	Centenary sand	38.8	5.29	3s
KaA	Kalmia loamy fine sand, 0 to 3 percent slopes	9.6	1.31	1
JO	Johnston mucky loam	51.1	6.98	7w
BnB	Blanton sand, 2 to 7 percent slopes	5.7	0.78	3s
Ca	Cape Fear loam	41.6	5.69	3w
Pp	Paxville sandy loam	158.2	21.6	3w
NoA	Norfolk loamy fine sand, 0 to 2 percent slopes	32.0	4.36	1
RaA	Rains fine sandy loam, 0 to 2 percent slopes, Southern Coastal Plain	0.4	0.06	4w
WaB	Wagram fine sand, 0 to 6 percent slopes	4.8	0.65	2s
Tr	Torhunta mucky sandy loam	27.1	3.69	3w
Pe	Pantego loam	8.8	1.2	3w
GbA	Goldsboro sandy loam, 0 to 3 percent slopes	90.6	12.37	2w
LnA	Lynchburg fine sandy loam, 0 to 2 percent slopes, Southern Coastal Plain	8.3	1.13	2w
Wh	Wasda muck	35.9	4.89	3w
Oc	Ocilla loamy sand	8.7	1.18	3w
Ra	Rains fine sandy loam, 0 to 2 percent slopes, Atlantic Coast Flatwoods	0.2	0.02	4w
We	Wahee loam	0.5	0.07	2w
Ly	Lynn Haven and Torhunta soils	18.2	2.48	6w
TOTALS		732.5	100%	2.84

|  Boundary 603.3 ac

SOIL CODE	SOIL DESCRIPTION	ACRES	%	CAP
Jo	Johns fine sandy loam	0.4	0.06	2w
JT	Johnston mucky loam	0.4	0.07	7w
KeA	Kenansville sand, 0 to 3 percent slopes	7.7	1.27	2s
Jh	Johns fine sandy loam	143.5	23.78	2w
DgA	Dogue sandy loam, 0 to 3 percent slopes	40.3	6.67	2w

Ce	Centenary sand	38.8	6.42	3s
KaA	Kalmia loamy fine sand, 0 to 3 percent slopes	9.6	1.6	1
JO	Johnston mucky loam	51.1	8.47	7w
BnB	Blanton sand, 2 to 7 percent slopes	5.7	0.94	3s
Ca	Cape Fear loam	41.6	6.9	3w
Pp	Paxville sandy loam	158.2	26.22	3w
NoA	Norfolk loamy fine sand, 0 to 2 percent slopes	28.8	4.77	1
RaA	Rains fine sandy loam, 0 to 2 percent slopes, Southern Coastal Plain	0.4	0.07	4w
WaB	Wagram fine sand, 0 to 6 percent slopes	0.0	0.0	2s
Tr	Torhunta mucky sandy loam	3.0	0.5	3w
Pe	Pantego loam	5.3	0.87	3w
GbA	Goldsboro sandy loam, 0 to 3 percent slopes	16.2	2.69	2w
LnA	Lynchburg fine sandy loam, 0 to 2 percent slopes, Southern Coastal Plain	7.7	1.28	2w
Wh	Wasda muck	35.9	5.94	3w
Oc	Ocilla loamy sand	8.7	1.44	3w
Ra	Rains fine sandy loam, 0 to 2 percent slopes, Atlantic Coast Flatwoods	0.2	0.03	4w
TOTALS		603.3	100%	2.86

 Boundary 128.6 ac

SOIL CODE	SOIL DESCRIPTION	ACRES	%	CAP
WaB	Wagram fine sand, 0 to 6 percent slopes	4.8	3.7	2s
NoA	Norfolk loamy fine sand, 0 to 2 percent slopes	3.2	2.46	1
Tr	Torhunta mucky sandy loam	23.5	18.25	3w
GbA	Goldsboro sandy loam, 0 to 3 percent slopes	74.4	57.84	2w
Pe	Pantego loam	3.6	2.77	3w
DgA	Dogue sandy loam, 0 to 3 percent slopes	0.0	0.0	2w
We	Wahee loam	0.5	0.41	2w
Ly	Lynn Haven and Torhunta soils	18.2	14.15	6w
LnA	Lynchburg fine sandy loam, 0 to 2 percent slopes, Southern Coastal Plain	0.5	0.41	2w
TOTALS		128.6	100%	2.75

 Boundary 0.6 ac

SOIL CODE	SOIL DESCRIPTION	ACRES	%	CAP
Tr	Torhunta mucky sandy loam	0.6	100.0	3w

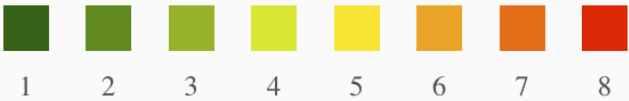
TOTALS		0.6	100%	3.0
--------	--	-----	------	-----

Capability Legend

Increased Limitations and Hazards

Decreased Adaptability and Freedom of Choice Users

Land, Capability



	1	2	3	4	5	6	7	8
'Wild Life'	•	•	•	•	•	•	•	•
Forestry	•	•	•	•	•	•	•	
Limited	•	•	•	•	•	•	•	
Moderate	•	•	•	•	•	•		
Intense	•	•	•	•	•			
Limited	•	•	•	•				
Moderate	•	•	•					
Intense	•	•						
Very Intense	•							

Grazing Cultivation

(c) climatic limitations (e) susceptibility to erosion

(s) soil limitations within the rooting zone (w) excess of water