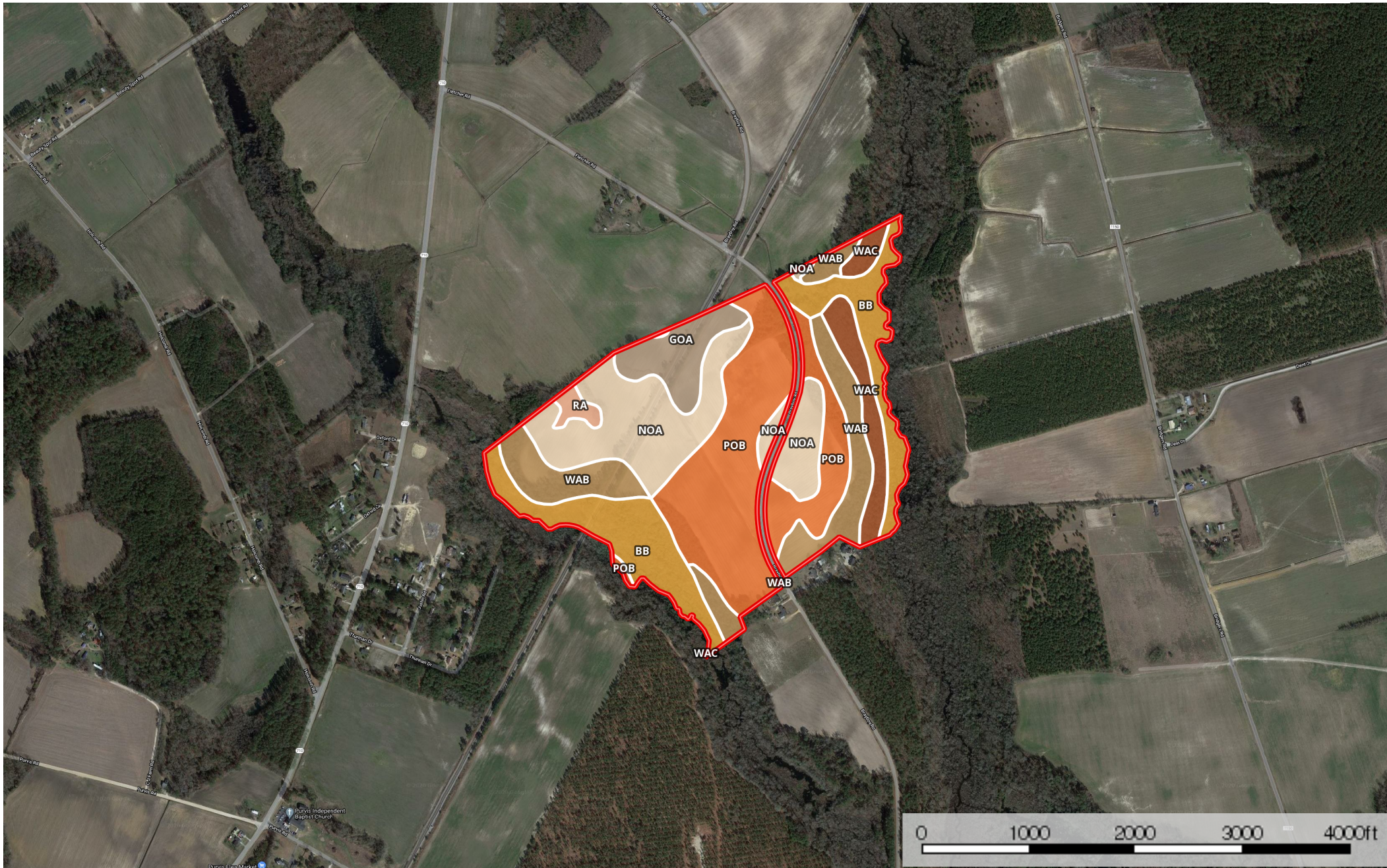



130 ac Adams Robeson BC

Robeson County, North Carolina, 130 AC +/-



 Boundary

|  All Polygons 130.0 ac

SOIL CODE	SOIL DESCRIPTION	ACRES	%	CAP
WaB	Wagram loamy sand, 0 to 6 percent slopes	20.3	15.62	2s
PoB	Pocalla loamy sand, 0 to 3 percent slopes	38.6	29.71	2s
NoA	Norfolk loamy sand, 0 to 2 percent slopes	27.8	21.42	1
BB	Bibb soils	24.9	19.12	5w
WaC	Wagram loamy sand, 6 to 10 percent slopes	8.5	6.55	3s
GoA	Goldsboro loamy sand, 0 to 2 percent slopes, Southern Coastal Plain	8.3	6.36	2w
Ra	Rains sandy loam, 0 to 2 percent slopes	1.6	1.23	4w
TOTALS		130.0	100%	2.45

|  Boundary 44.9 ac

SOIL CODE	SOIL DESCRIPTION	ACRES	%	CAP
WaB	Wagram loamy sand, 0 to 6 percent slopes	10.7	23.82	2s
PoB	Pocalla loamy sand, 0 to 3 percent slopes	9.4	21.01	2s
NoA	Norfolk loamy sand, 0 to 2 percent slopes	5.8	13.0	1
BB	Bibb soils	10.4	23.21	5w
WaC	Wagram loamy sand, 6 to 10 percent slopes	8.5	18.96	3s
TOTALS		44.9	100%	2.76

|  Boundary 85.1 ac









SOIL CODE	SOIL DESCRIPTION	ACRES	%	CAP
WaB	Wagram loamy sand, 0 to 6 percent slopes	9.6	11.29	2s
PoB	Pocalla loamy sand, 0 to 3 percent slopes	29.2	34.3	2s
WaC	Wagram loamy sand, 6 to 10 percent slopes	0.0	0.0	3s
BB	Bibb soils	14.4	16.96	5w
NoA	Norfolk loamy sand, 0 to 2 percent slopes	22.0	25.86	1
GoA	Goldsboro loamy sand, 0 to 2 percent slopes, Southern Coastal Plain	8.3	9.71	2w
Ra	Rains sandy loam, 0 to 2 percent slopes	1.6	1.87	4w
TOTALS		85.1	100%	2.29

Capability Legend

Increased Limitations and Hazards

Decreased Adaptability and Freedom of Choice Users

Land, Capability

								
	1	2	3	4	5	6	7	8
'Wild Life'	•	•	•	•	•	•	•	•
Forestry	•	•	•	•	•	•	•	
Limited	•	•	•	•	•	•	•	
Moderate	•	•	•	•	•	•		
Intense	•	•	•	•	•			
Limited	•	•	•	•				
Moderate	•	•	•					
Intense	•	•						
Very Intense	•							

Grazing Cultivation

(c) climatic limitations (e) susceptibility to erosion

(s) soil limitations within the rooting zone (w) excess of water