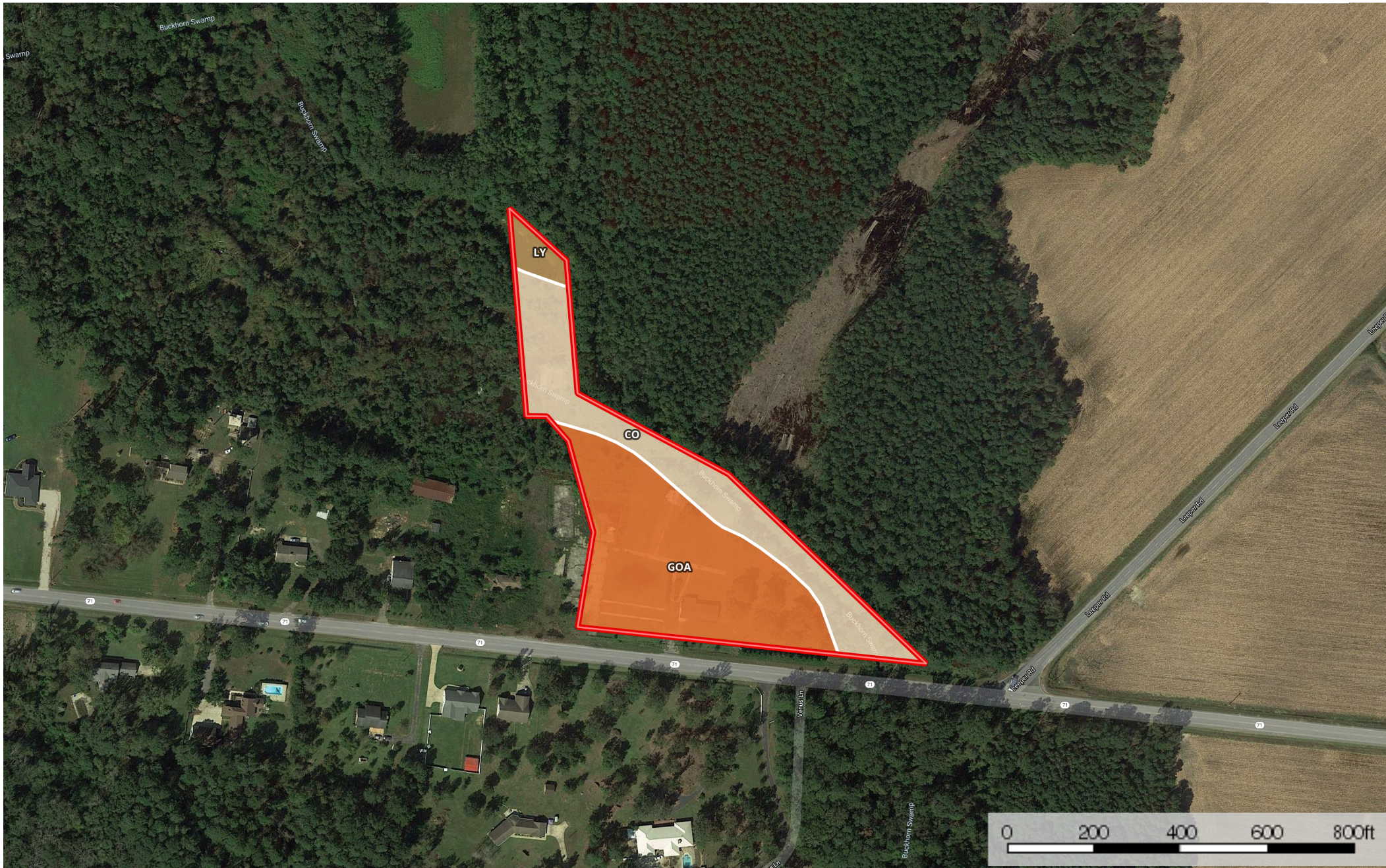



5.22 ac Burnette Robeson BC

Robeson County, North Carolina, 5.22 AC +/-



 Boundary

|  Boundary 4.6 ac









SOIL CODE	SOIL DESCRIPTION	ACRES	%	CAP
Ly	Lynchburg sandy loam, 0 to 2 percent slopes	0.2	4.11	2w
GoA	Goldsboro loamy sand, 0 to 2 percent slopes, Southern Coastal Plain	2.6	57.41	2w
Co	Coxville loam	1.8	38.48	3w
TOTALS		4.6	100%	2.38

Capability Legend

Increased Limitations and Hazards

Decreased Adaptability and Freedom of Choice Users

Land, Capability

								
	1	2	3	4	5	6	7	8
'Wild Life'	•	•	•	•	•	•	•	•
Forestry	•	•	•	•	•	•	•	
Limited	•	•	•	•	•	•	•	
Moderate	•	•	•	•	•	•		
Intense	•	•	•	•	•			
Limited	•	•	•	•				
Moderate	•	•	•					
Intense	•	•						
Very Intense	•							

Grazing Cultivation

(c) climatic limitations (e) susceptibility to erosion

(s) soil limitations within the rooting zone (w) excess of water