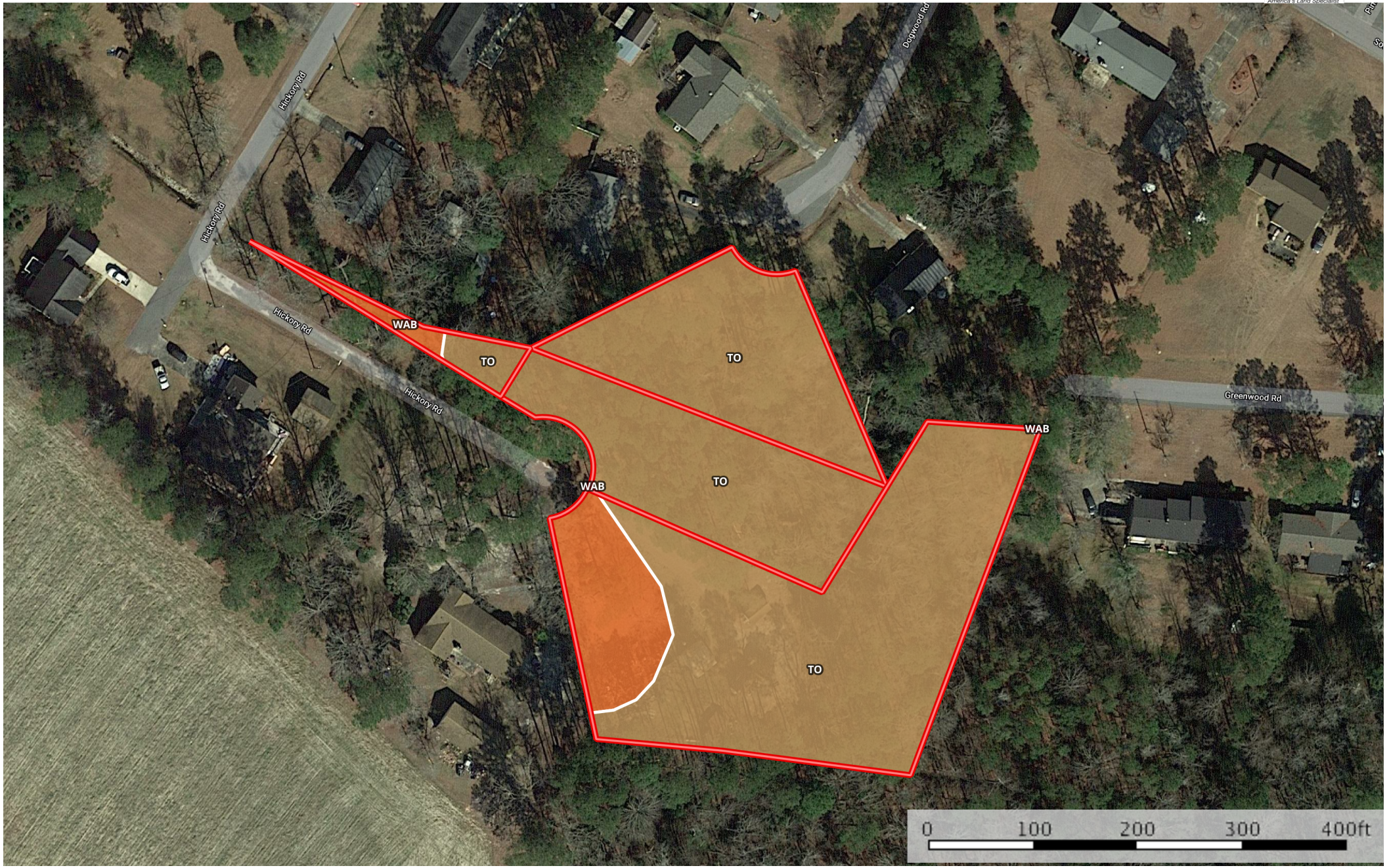


**+ - 2.30 ac Williamson Columbus KR**  
Columbus County, North Carolina, 2.3 AC +/-



Boundary



|  All Polygons 2.6 ac

SOIL CODE	SOIL DESCRIPTION	ACRES	%	CAP
To	Torhunta fine sandy loam	2.3	89.31	3w
WaB	Wagram loamy fine sand, 0 to 6 percent slopes	0.3	10.69	2s
TOTALS		2.6	100%	2.89

|  Boundary 0.1 ac

SOIL CODE	SOIL DESCRIPTION	ACRES	%	CAP
To	Torhunta fine sandy loam	0.0	57.21	3w
WaB	Wagram loamy fine sand, 0 to 6 percent slopes	0.0	42.79	2s
TOTALS		0.1	100%	2.57

|  Boundary 0.5 ac

SOIL CODE	SOIL DESCRIPTION	ACRES	%	CAP
To	Torhunta fine sandy loam	0.5	100.0	3w
TOTALS		0.5	100%	3.0

|  Boundary 0.5 ac

SOIL CODE	SOIL DESCRIPTION	ACRES	%	CAP
To	Torhunta fine sandy loam	0.5	99.92	3w
WaB	Wagram loamy fine sand, 0 to 6 percent slopes	0.0	0.08	2s
TOTALS		0.5	100%	3.0

|  Boundary 1.4 ac









SOIL CODE	SOIL DESCRIPTION	ACRES	%	CAP
To	Torhunta fine sandy loam	1.2	82.99	3w
WaB	Wagram loamy fine sand, 0 to 6 percent slopes	0.2	17.01	2s
TOTALS		1.4	100%	2.83

## Capability Legend

Increased Limitations and Hazards

Decreased Adaptability and Freedom of Choice Users

Land, Capability

								
	1	2	3	4	5	6	7	8
'Wild Life'	•	•	•	•	•	•	•	•
Forestry	•	•	•	•	•	•	•	
Limited	•	•	•	•	•	•	•	
Moderate	•	•	•	•	•	•		
Intense	•	•	•	•	•			
Limited	•	•	•	•				
Moderate	•	•	•					
Intense	•	•						
Very Intense	•							

### Grazing Cultivation

(c) climatic limitations (e) susceptibility to erosion

(s) soil limitations within the rooting zone (w) excess of water