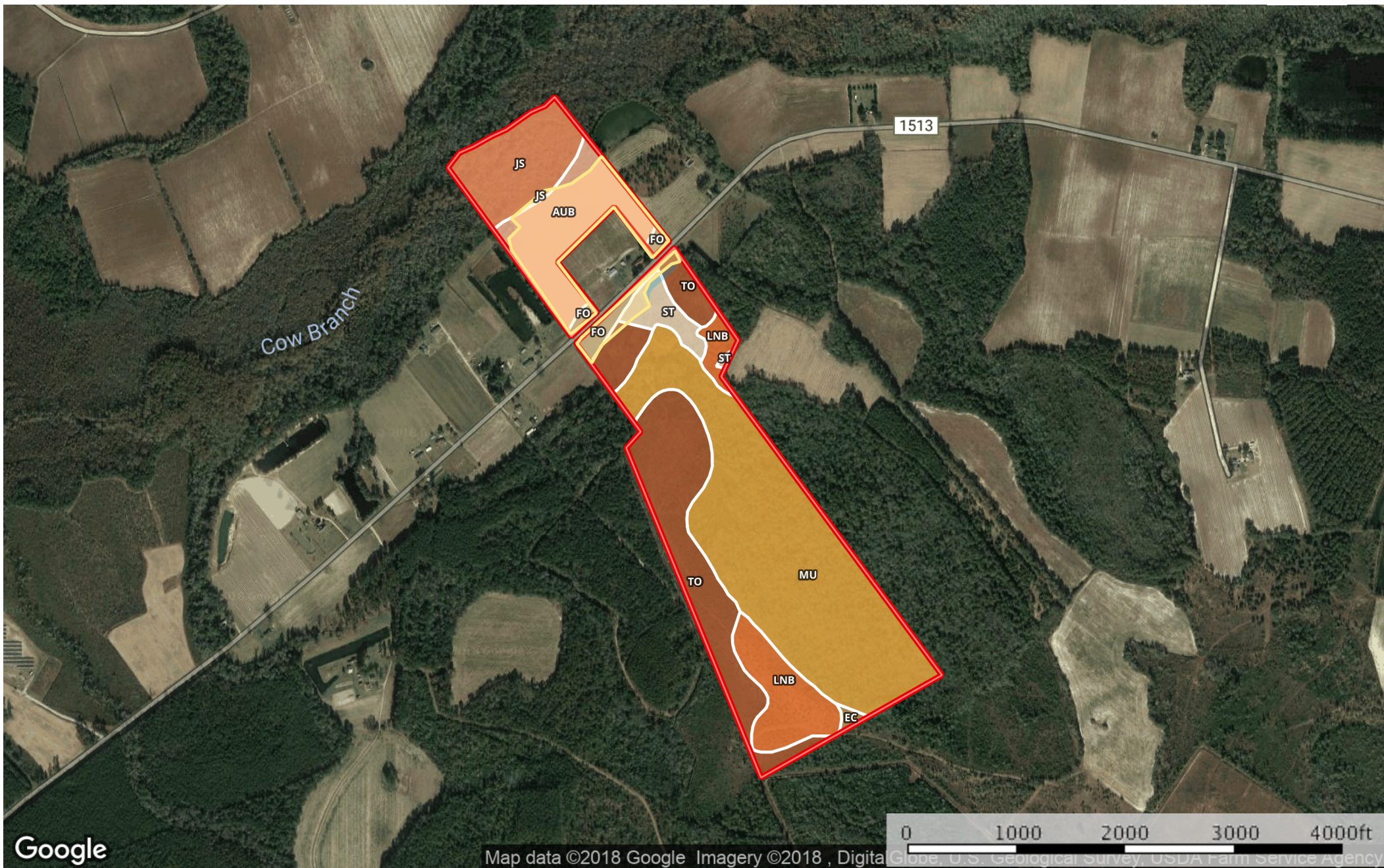


127.86 ac Kissam Columbus BC
Columbus County, North Carolina, 127.86 AC +/-



Google

Map data ©2018 Google Imagery ©2018 , DigitalGlobe, U.S. Geological Survey, USDA Farm Service Agency

- Field
- Pond / Tank
- Boundary

|  All Polygons 140.9 ac

SOIL CODE	SOIL DESCRIPTION	ACRES	%	CAP
Ec	Echaw loamy sand	0.5	0.38	3s
LnB	Leon sand, 1 to 4 percent slopes	11.5	8.13	4w
St	Stallings sandy loam	4.0	2.82	2w
Mu	Murville fine sand	54.1	38.41	5w
To	Torhunta fine sandy loam	27.4	19.46	6w
Fo	Foreston loamy fine sand	3.7	2.59	6w
AuB	Autryville sand, 0 to 3 percent slopes	27.1	19.21	2s
Js	Johnston loam, frequently flooded	12.7	9.0	7w
TOTALS		140.9	100%	4.65

|  Boundary 99.2 ac

SOIL CODE	SOIL DESCRIPTION	ACRES	%	CAP
Ec	Echaw loamy sand	0.5	0.54	3s
LnB	Leon sand, 1 to 4 percent slopes	11.5	11.55	4w
St	Stallings sandy loam	4.0	4.0	2w
Mu	Murville fine sand	54.1	54.55	5w
To	Torhunta fine sandy loam	27.4	27.63	6w
Fo	Foreston loamy fine sand	1.7	1.73	6w
TOTALS		99.2	100%	5.05

|  Boundary 28.0 ac

SOIL CODE	SOIL DESCRIPTION	ACRES	%	CAP
Fo	Foreston loamy fine sand	1.0	3.57	6w
AuB	Autryville sand, 0 to 3 percent slopes	14.5	51.82	2s
Js	Johnston loam, frequently flooded	12.5	44.61	7w
TOTALS		28.0	100%	4.37









|  Field 13.7 ac

SOIL CODE	SOIL DESCRIPTION	ACRES	%	CAP
Fo	Foreston loamy fine sand	0.9	6.82	6w
AuB	Autryville sand, 0 to 3 percent slopes	12.6	91.74	2s
Js	Johnston loam, frequently flooded	0.2	1.45	7w
TOTALS		13.7	100%	2.35

Capability Legend

Increased Limitations and Hazards

Decreased Adaptability and Freedom of Choice Users

Land, Capability Class(non-irrigated)								
	1	2	3	4	5	6	7	8
'Wild Life'	•	•	•	•	•	•	•	•
Forestry	•	•	•	•	•	•	•	
Limited	•	•	•	•	•	•	•	
Moderate	•	•	•	•	•	•		
Intense	•	•	•	•	•			
Limited	•	•	•	•				
Moderate	•	•	•					
Intense	•	•						
Very Intense	•							

Grazing Cultivation

(c) climatic limitations (e) susceptibility to erosion

(s) soil limitations within the rooting zone (w) excess of water