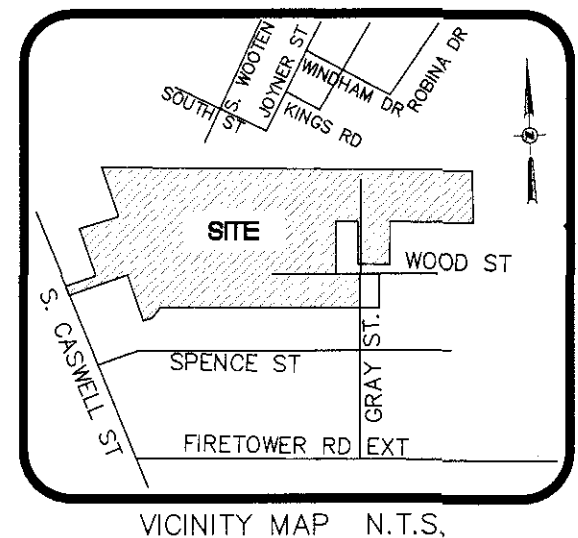
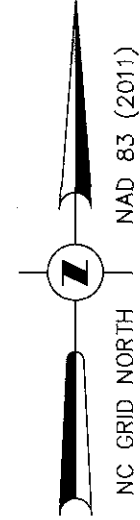


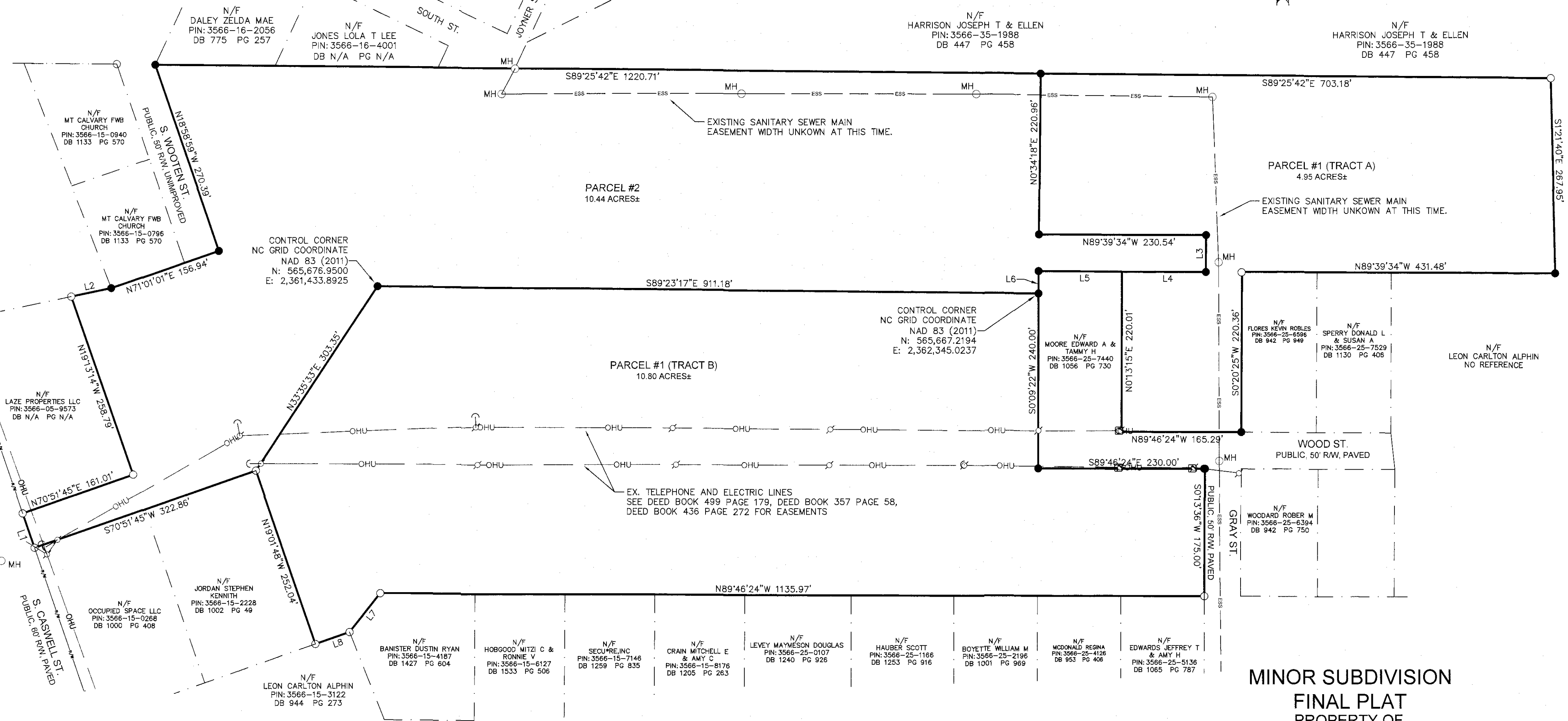
See Map 17 249
For Notes

Doc ID: 005557190001
Recorded: 02/09/2024 at 01:30:37 PM
Lenoir County, NC
Trevia Jenkins, Registrar of Deeds
BK 17 Pg 248

LINE	BEARING	DISTANCE
L1	N19°08'15"W	50.00'
L2	N78°17'14"E	56.35'
L3	S0°20'24"W	50.29'
L4	N89°42'47"W	115.75'
L5	N89°27'45"W	115.00'
L6	S0°13'15"W	30.64'
L7	S38°27'39"W	68.22'
L8	S70°48'07"W	49.82'



W:\CCTAYLOR\23133\Survey\133-2 LOT 5D LEGAL DESC MFR2.dwg Last Plotted by JAMES BURGESS for Green Engineering on Monday, February 05, 2024 11:58:33 AM



CONTROL CORNER
NC GRID COORDINATE
NAD 83 (2011)
N: 565,667.2194
E: 2,362,345.0237

CONTROL CORNER
NC GRID COORDINATE
NAD 83 (2011)
N: 565,676.9500
E: 2,361,433.8925

N/F LAZE PROPERTIES LLC
PIN: 3566-05-9573
DB N/A PG N/A

N/F MT CALVARY FWB CHURCH
PIN: 3566-15-0940
DB 1133 PG 570

N/F MT CALVARY FWB CHURCH
PIN: 3566-15-0796
DB 1133 PG 570

N/F DALEY ZELDA MAE
PIN: 3566-16-2056
DB 775 PG 257

N/F JONES LOLA T LEE
PIN: 3566-16-4001
DB N/A PG N/A

N/F HARRISON JOSEPH T & ELLEN
PIN: 3566-35-1988
DB 447 PG 458

N/F HARRISON JOSEPH T & ELLEN
PIN: 3566-35-1988
DB 447 PG 458

S89°25'42"E 703.18'

S89°25'42"E 1220.71'

PARCEL #2
10.44 ACRES±

PARCEL #1 (TRACT A)
4.95 ACRES±

S89°23'17"E 911.18'

PARCEL #1 (TRACT B)
10.80 ACRES±

CONTROL CORNER
NC GRID COORDINATE
NAD 83 (2011)
N: 565,667.2194
E: 2,362,345.0237

N89°39'34"W 431.48'

EX. TELEPHONE AND ELECTRIC LINES
SEE DEED BOOK 499 PAGE 179, DEED BOOK 357 PAGE 58,
DEED BOOK 436 PAGE 272 FOR EASEMENTS

WOOD ST.
PUBLIC, 50' R/W, PAVED

N/F LAZE PROPERTIES LLC
PIN: 3566-05-9573
DB N/A PG N/A

N/F MT CALVARY FWB CHURCH
PIN: 3566-15-0940
DB 1133 PG 570

N/F OCCUPIED SPACE LLC
PIN: 3566-15-0268
DB 1000 PG 408

N/F JORDAN STEPHEN
KENNETH
PIN: 3566-15-2228
DB 1002 PG 49

N/F LEON CARLTON ALPHIN
PIN: 3566-15-3122
DB 944 PG 273

N/F BANISTER DUSTIN RYAN
PIN: 3566-15-4187
DB 1427 PG 604

N/F HOBGOOD MITZI C & RONNIE V
PIN: 3566-15-6127
DB 1533 PG 506

N/F SECURE, INC
PIN: 3566-15-7146
DB 1259 PG 835

N/F CRAIN MITCHELL E & AMY C
PIN: 3566-15-8176
DB 1205 PG 263

N/F LEVEY MAYNOR DOUGLAS
PIN: 3566-25-0107
DB 1240 PG 926

N/F HAUBER SCOTT
PIN: 3566-25-1166
DB 1253 PG 916

N/F BOYETTE WILLIAM M
PIN: 3566-25-2196
DB 1001 PG 969

N/F MCDONALD REGINA
PIN: 3566-25-4126
DB 953 PG 408

N/F EDWARDS JEFFREY T & AMY H
PIN: 3566-25-5136
DB 1065 PG 787

N/F FLORES KEVIN ROBLES
PIN: 3566-25-6596
DB 942 PG 949

N/F SPERRY DONALD L & SUSAN A
PIN: 3566-25-7529
DB 1130 PG 406

N/F LEON CARLTON ALPHIN
NO REFERENCE

MINOR SUBDIVISION
FINAL PLAT
PROPERTY OF
CCTAYLOR DEVELOPMENT, LLC

LOCATED IN
MOSELY HALL TOWNSHIP **LENOIR COUNTY, NC**
FEBRUARY 5, 2024 **SCALE: 1" = 100'**

DATE OF SURVEY (8/8-10/18/2023)

GREEN ENGINEERING
NC FIRM LICENSE: P-0115
WATER, WASTEWATER, SURVEYING, PLANNING, PROJECT MANAGEMENT
303 GOLDSBORO ST. EAST, P.O. BOX 609 WILSON, N.C. 27893
TEL (252) 237-5365 FAX (252) 243-7489 office@greeneng.com

I, JAMES A. BURGESS II, CERTIFY THAT THIS PLAT WAS DRAWN UNDER MY SUPERVISION FROM AN ACTUAL SURVEY MADE UNDER MY SUPERVISION (DEED REFERENCES AS SHOWN HEREIN); THAT THE BOUNDARIES NOT SURVEYED ARE CLEARLY INDICATED ARE CLEARLY INDICATED AND DRAWN FROM INFORMATION FOUND IN REFERENCES AS SHOWN; THAT THE RATIO OF PRECISION AS CALCULATED IS 1:10,000+; THAT THIS PLAT WAS PREPARED IN ACCORDANCE WITH GS 47-30 AS AMENDED. WITNESS MY ORIGINAL SIGNATURE, REGISTRATION NUMBER, AND SEAL THIS 5TH DAY OF FEBRUARY, 2024.

James A. Burgess II
JAMES A. BURGESS II PROFESSIONAL SURVEYOR
SEAL: 3560-3920/2024

I FURTHER HEREBY CERTIFY TO GS 47-30 THAT THIS SURVEY CREATES A SUBDIVISION OF LAND WITHIN THE AREA OF A COUNTY OR MUNICIPALITY THAT HAS AN ORDINANCE THAT REGULATES PARCELS OF LAND.

SEE SHEET 2 OF 2 FOR
NOTES AND CERTIFICATES

SHEET 1 OF 2