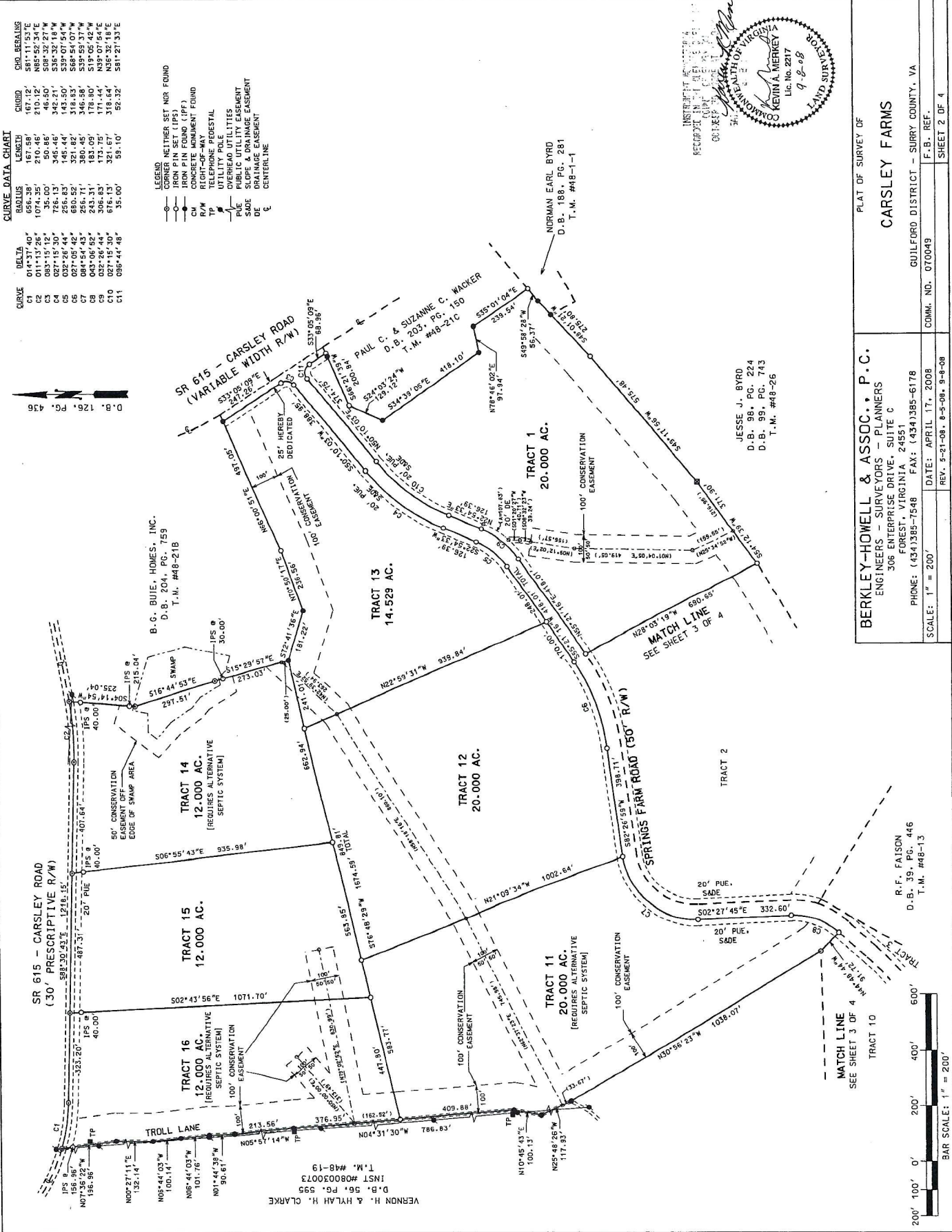


202



CURVE DATA CHART

CURVE	DELTA	RADIUS	LENGTH	CHORD BEARING
C1	01°37'40"	686.38'	167.36'	N85°50'30"E
C2	03°15'12"	1036.00'	46.50'	S08°32'27"W
C3	03°15'30"	786.13'	346.46'	S36°32'18"W
C4	02°26'44"	266.83'	145.44'	S39°07'54"W
C5	02°05'42"	600.52'	321.82'	S89°50'17"W
C6	04°06'52"	243.31'	183.09'	S19°05'42"W
C7	03°26'44"	306.83'	173.75'	N39°07'54"E
C8	02°15'30"	676.13'	321.67'	N36°32'18"E
C9	08°44'48"	35.00'	59.10'	S81°27'33"E

- LEGEND**
- CORNER NEITHER SET NOR FOUND
 - IRON PIN SET (IPS)
 - IRON PIN FOUND (IPF)
 - CORNER MANAGEMENT FOUND
 - CONCRETE-MARK
 - TP TELEPHONE PRESTAL
 - UTILITY POLE
 - OVERHEAD UTILITIES
 - PUBLIC UTILITY EASEMENT
 - EDGE OF SWAMP AREA
 - DRAINAGE EASEMENT
 - CENTERLINE

VERNON H. & HYLAH H. CLARKE
D.B. 56, P.G. 595
INST #080030073
T.M. #48-19

B.G. BUIE, HOMES, INC.
D.B. 204, P.G. 759
T.M. #48-21B

PAUL C. & SUZANNE C. WACKER
D.B. 203, P.G. 150
T.M. #48-21C

NORMAN EARL BYRD
D.B. 188, P.G. 281
T.M. #48-1-1

JESSE J. BYRD
D.B. 98, P.G. 224
D.B. 99, P.G. 743
T.M. #48-26

R.F. FAISON
D.B. 35, P.G. 446
T.M. #48-15



PLAT OF SURVEY OF
CARSLEY FARMS
GUILFORD DISTRICT - SURRY COUNTY, VA
COMM. NO. 070049
F.B. REF.
SHEET 2 OF 4

BERKLEY-HOWELL & ASSOC., P.C.
ENGINEERS - SURVEYORS - PLANNERS
306 ENTERPRISE DRIVE, SUITE C
FOREST, VIRGINIA 24551
PHONE: (434)385-7548 FAX: (434)385-6178
DATE: APRIL 17, 2008
REV. 5-21-08, 8-5-08, 9-8-08

SCALE: 1" = 200'

BAR SCALE: 1" = 200'

200' 100' 0' 200' 400' 600'



RESUBDIVISION OF
TRACTS 1, 2, 3, 10, 12 & 13
PHASE I, CARSELEY FARMS
 GULLFORD DISTRICT - SURRY COUNTY, VA

BERKLEY-HOWELL & ASSOC., P.C.
 ENGINEERS - SURVEYORS - PLANNERS
 306 ENTERPRISE DRIVE, SUITE C
 FOREST, VIRGINIA, 24551
 PHONE: (434)385-7546 FAX: (434)385-6178

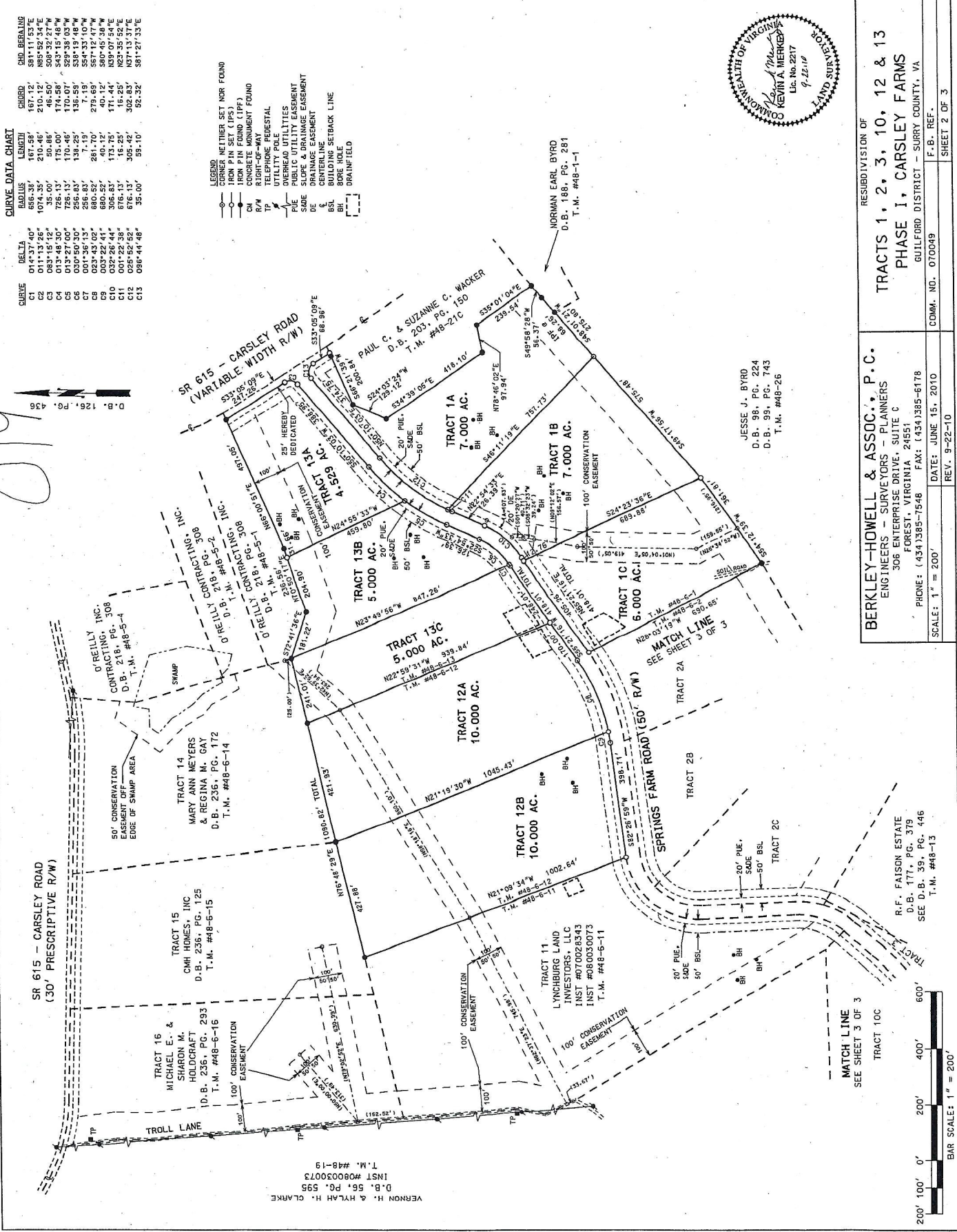
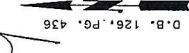
DATE: JUNE 15, 2010
 REV. 9-22-10

SCALE: 1" = 200'

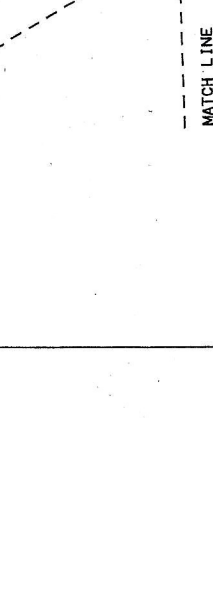
COMM. NO. 070049
 F.B. REF.
 SHEET 2 OF 3

CURVE	DELTA	RADIUS	CHORD	CHORD BEARING
C1	014°37'40"	656.35'	167.12'	S81°11'53"E
C2	011°13'26"	1074.35'	210.46'	S85°52'34"E
C3	013°48'30"	726.13'	174.56'	S43°15'48"W
C4	013°27'00"	726.13'	170.07'	S29°38'03"W
C5	020°50'30"	256.83'	138.25'	S38°19'48"W
C6	001°35'13"	256.83'	7.19'	S54°33'10"W
C7	003°22'44"	600.52'	40.12'	S80°45'38"W
C8	032°26'44"	306.83'	171.44'	S39°07'54"E
C9	011°22'38"	676.13'	16.25'	S23°35'52"E
C10	025°52'52"	676.13'	305.42'	S37°13'37"E
C11	036°44'48"	35.00'	52.32'	S61°27'35"E

- LEGEND
- CORNER NEITHER SET NOR FOUND
 - IRON PIN FOUND (IPF)
 - CONCRETE MONUMENT FOUND
 - CHAIN
 - TELEPHONE PRESTAL
 - UTILITY POLE
 - OVERHEAD UTILITIES
 - PUBLIC UTILITY EASEMENT
 - SIDE DRIVE EASEMENT
 - CENTERLINE EASEMENT
 - BUILDING SETBACK LINE
 - BORE HOLE
 - DRAINFIELD



VERNON H. & HYLAH H. CLARKE
 D.B. 56, PG. 595
 INST #080030073
 T.M. #48-19



MATCH LINE
 SEE SHEET 3 OF 3