

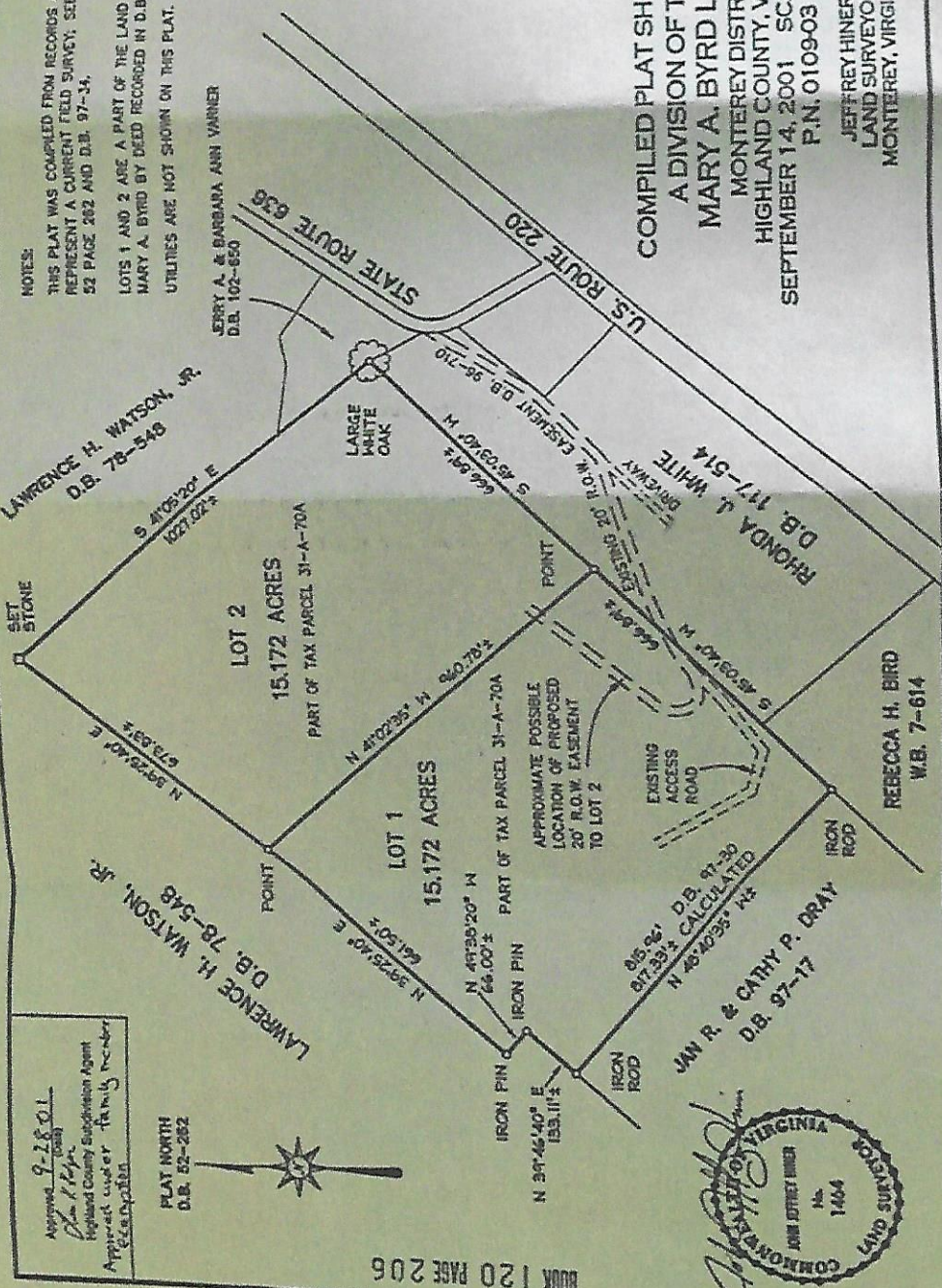
NOTES:
 THIS PLAT WAS COMPILED FROM RECORDS AND DOES NOT REPRESENT A CURRENT FIELD SURVEY. SEE PLATS IN D.B. 52 PAGE 262 AND D.B. 97-34.
 LOTS 1 AND 2 ARE A PART OF THE LAND CONVEYED TO MARY A. BYRD BY DEED RECORDED IN D.B. 69-75B. UTILITIES ARE NOT SHOWN ON THIS PLAT.

JERRY A. & BARBARA ANN VARNER
 D.B. 102-850

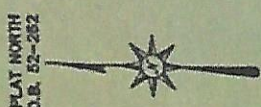
LAWRENCE H. WATSON, JR.
 D.B. 78-548

LARGE WHITE OAK

COMPILED PLAT SHOWING
 A DIVISION OF THE
 MARY A. BYRD LAND
 MONTEREY DISTRICT
 HIGHLAND COUNTY, VIRGINIA
 SEPTEMBER 14, 2001 SCALE: 1"= 200'
 P.N. 0109-03
 JEFFREY HINER
 LAND SURVEYOR
 MONTEREY, VIRGINIA



Approved 9-18-01
 [Signature]
 Highland County Subdivision Agent
 Approval under family member
 jurisdiction



BOOK 120 PAGE 206

