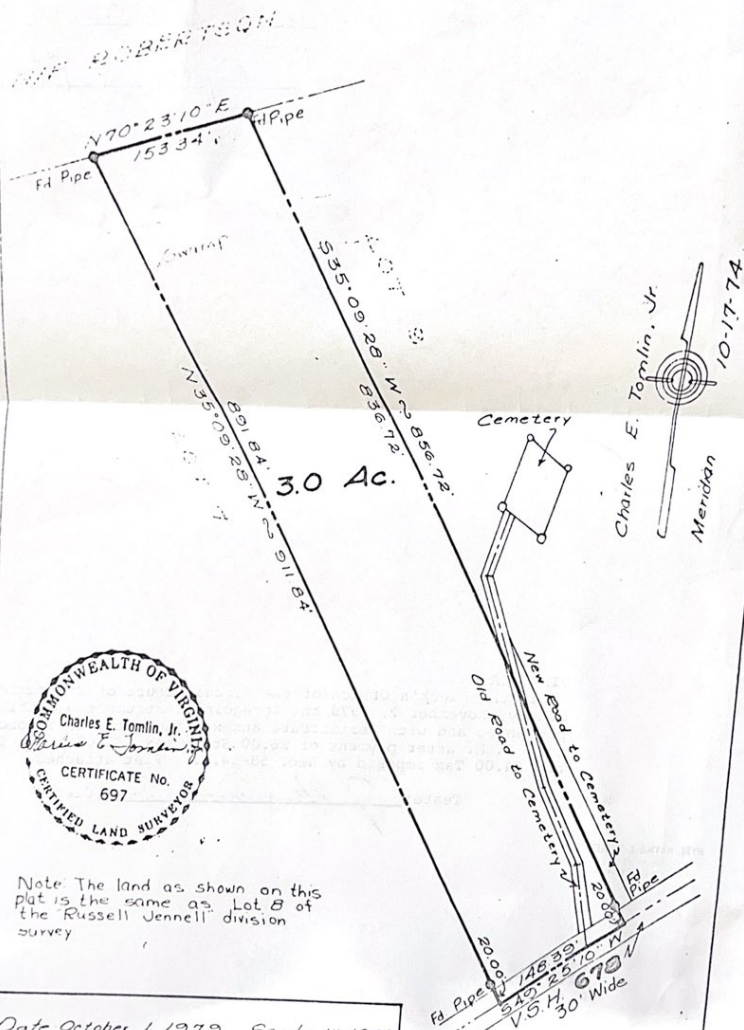


BOUNDARY SURVEY DAVID GEORGE ANDREWS &

MARY E. ANDREWS
WICOMICO MAGISTERIAL DISTRICT
NORTHUMBERLAND COUNTY, VIRGINIA



Date October 1, 1979 Scale 1"=100'
TOMLIN & KEYSER
 WICOMICO CHURCH, VA.
 TAPPAHANNOCK, VA. - Branch
 Drawn by C.H.S. Job No. NW223-D-8
 Checked by R.H.M. F.B.
 Sect. No. 42-86