

For Deed see Instrument # 050002349

G.L. EVANS
SHIRLEY P. EVANS
D.B. 331 PG. 643



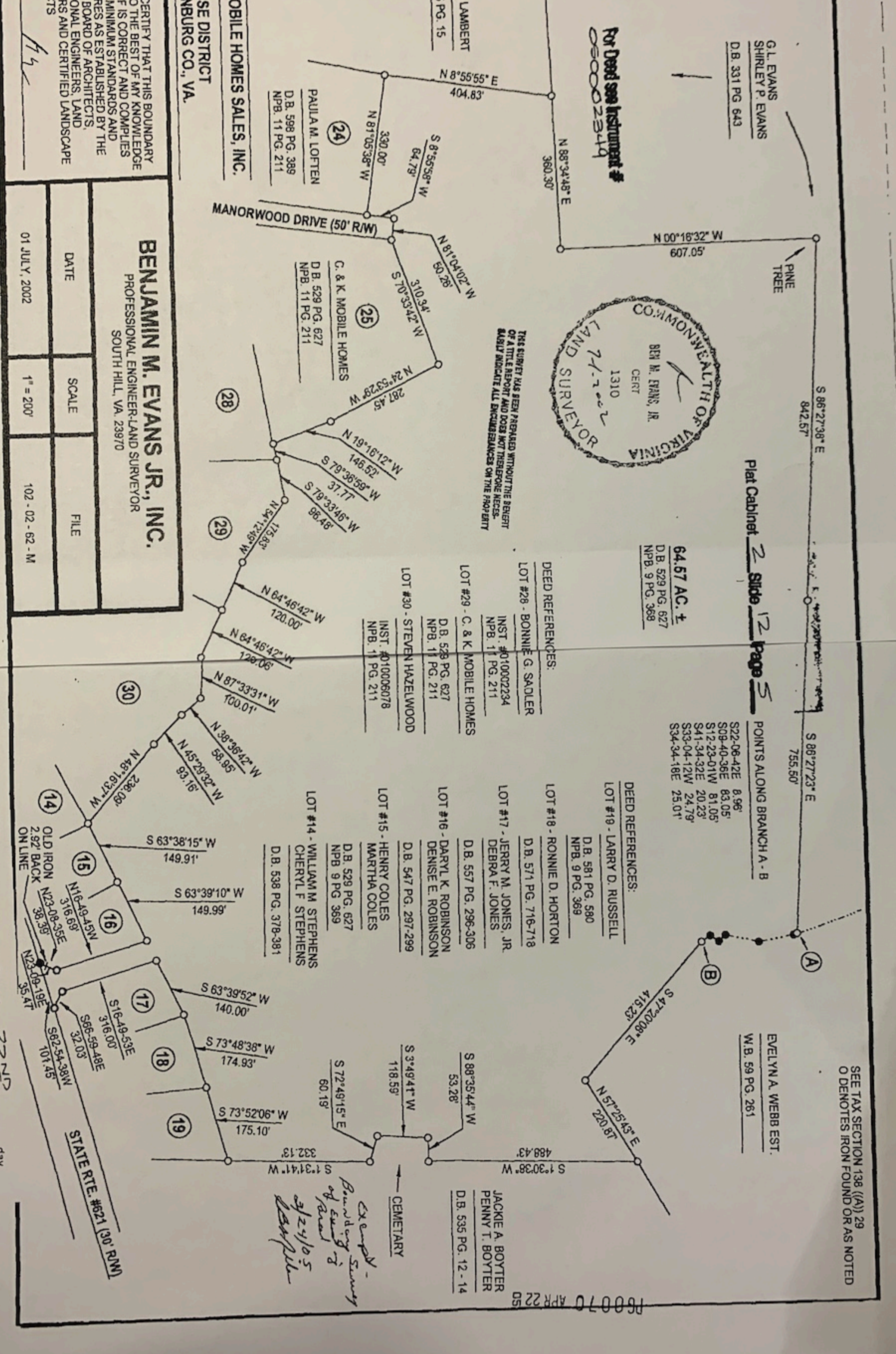
THIS SURVEY HAS BEEN PREPARED WITHOUT THE BENEFIT OF A TITLE REPORT AND DOES NOT THEREFORE NECESSARILY INDICATE ALL ENCUMBRANCES ON THE PROPERTY

C. & K. MOBILE HOMES SALES, INC.
LA CROSSE DISTRICT
MECKLENBURG CO., VA.

I HEREBY CERTIFY THAT THIS BOUNDARY SURVEY TO THE BEST OF MY KNOWLEDGE AND BELIEF IS CORRECT AND COMPLIES WITH THE MINIMUM STANDARDS AND PROCEDURES AS ESTABLISHED BY THE VA STATE BOARD OF ARCHITECTS, PROFESSIONAL ENGINEERS, LAND SURVEYORS AND CERTIFIED LANDSCAPE ARCHITECTS

BENJAMIN M. EVANS JR., INC.
PROFESSIONAL ENGINEER-LAND SURVEYOR
SOUTH HILL, VA. 23970

DATE	SCALE	FILE
01 JULY, 2002	1" = 200'	102 - 02 - 62 - M



64.67 AC. ±
D.B. 529 PG. 627
NPB. 9 PG. 368

Plat Cabinet 2 Slide 12 Page 5

POINTS ALONG BRANCH A - B
S22-06-42E 8.96'
S09-40-36E 83.05'
S12-23-01W 81.05'
S41-34-32E 20.23'
S33-04-12W 24.79'
S34-34-18E 25.01'

DEED REFERENCES:
LOT #28 - BONNIE G. SADLER
INST. #010002234
NPB. 11 PG. 211

LOT #29 - C. & K. MOBILE HOMES
D.B. 528 PG. 627
NPB. 11 PG. 211

LOT #30 - STEVEN HAZELWOOD
INST. #010006078
NPB. 11 PG. 211

DEED REFERENCES:
LOT #19 - LARRY D. RUSSELL
D.B. 581 PG. 580
NPB. 9 PG. 369

LOT #18 - RONNIE D. HORTON
D.B. 571 PG. 716-718

LOT #17 - JERRY M. JONES, JR.
DEBRA F. JONES
D.B. 557 PG. 296-306

LOT #16 - DARYL K. ROBINSON
DENISE E. ROBINSON
D.B. 547 PG. 297-299

LOT #15 - HENRY COLES
MARTHA COLES
D.B. 529 PG. 627
NPB. 9 PG. 369

LOT #14 - WILLIAM M. STEPHENS
CHERYL F. STEPHENS
D.B. 538 PG. 378-381

EVELYN A. WEBB EST.
W.B. 59 PG. 261

JACKIE A. BOYTER
PENNY T. BOYTER
D.B. 535 PG. 12 - 14

Except Boundary Survey of 2/24/05 by [Signature]

CEMETARY

STATE RTE #621 (3.0 R/W)
OLD IRON N23-08-35E
2.92' BACK
ON LINE

SEE TAX SECTION 138 ((A)) 29
O DENOTES IRON FOUND OR AS NOTED

VIRGINIA: In the Clerk's Office of Mecklenburg Circuit Court the 22ND day of APRIL 2005 at 2:28 PM. The foregoing instrument together with the certificate of acknowledgment thereon endorsed was this day admitted to record and all state and local taxes paid thereon.

Teste: E. E. Coleman, Jr., Clerk

By: [Signature] Deputy Clerk