

- (1) SPECIAL DESIGN SHOULDER  
SLOT INLET TYPE I
- (2) TO OUT  
25'-15" CORR. PIPE REQ'D  
1-30" BEND JOINT REQ'D  
1 EW-1 REQ'D. RT. 55'-5" KEW  
STD. EC-1 REQ'D  
2.0 TONS TYPE "A"  
2.0 SQ. YDS. RIP RAP  
FILTER CLOTH REQ'D
- (3) SPECIAL DESIGN SHOULDER  
SLOT INLET TYPE I
- (4) TO OUT  
30'-15" CORR. PIPE REQ'D  
1-30" BEND JOINT REQ'D  
1 EW-1 REQ'D. 60' SKEW  
STD. EC-1 REQ'D  
2.0 TONS TYPE "A"  
2.0 SQ. YDS. RIP RAP  
FILTER CLOTH REQ'D
- (5) 24'-12" PIPE REQ'D  
(2' COV.) ENT. RT.
- (6) 24'-12" PIPE REQ'D  
(1' COV.) ENT. RT.
- (7) 62'-18" PIPE REQ'D (1' COV.)  
INV. (IN) 225.5 INV. (OUT) 216.0  
2 ES-1 OR 2 REQ'D.  
STD. EC-1 REQ'D.  
2.6 TONS TYPE "A"  
2.6 SQ. YDS. RIP RAP  
FILTER CLOTH REQ'D

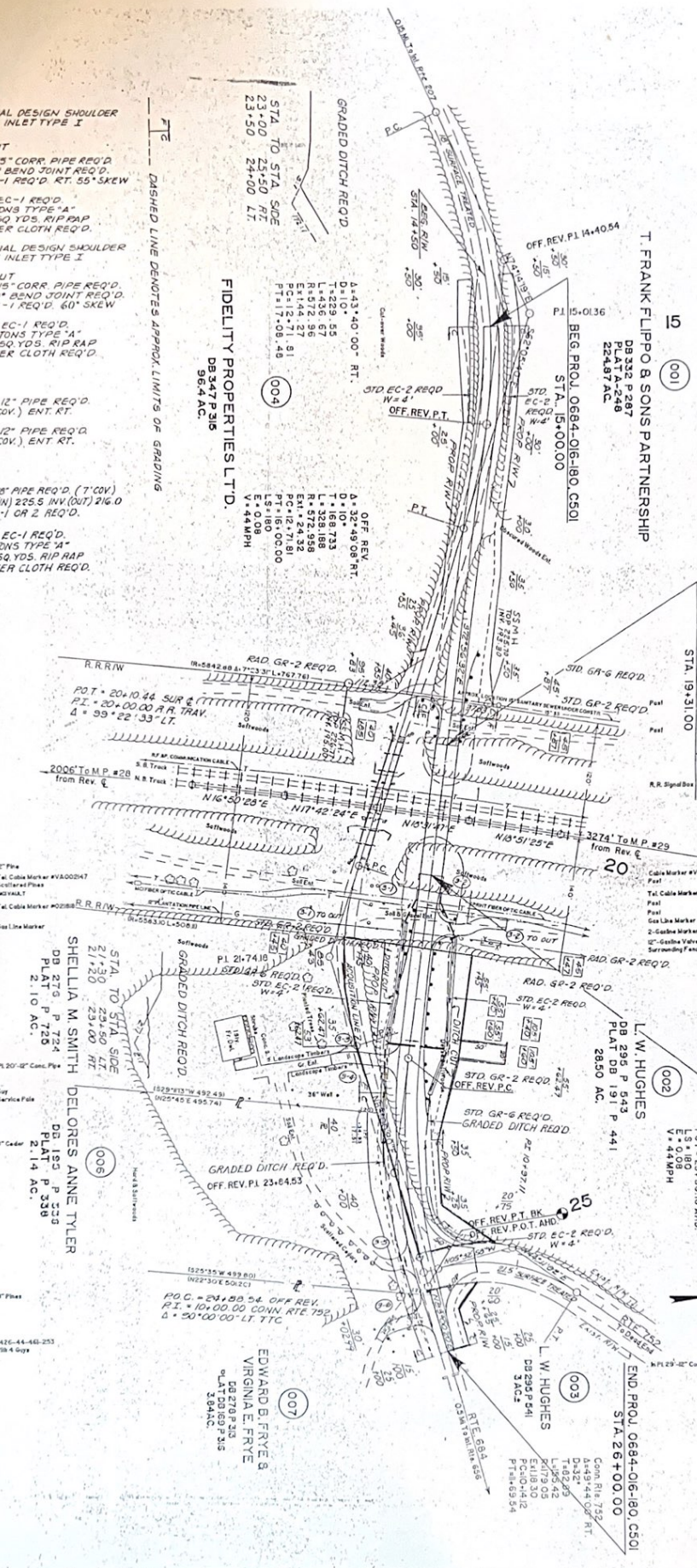
**RICHMOND, FREDERICKSBURG,  
B POTOMAC RAILROAD COMPANY.**

DB 69 P 402  
DB 69 P 436  
DB 95 P 507  
DB 95 P 528

**SHELLIA M. SMITH  
DELORES ANNE TYLER**

DB 976 P 724  
PLAT 2.10 AC.

**NOTE: DASHED LINE DENOTES OFFICE REV. & TO BE USED.  
NOTE: FIGURES IN BRACKETS AND DOTTED DASHED LINES  
DENOTES PERMANENT CASEMENTS.**



**T. FRANK FLIPPO & SONS PARTNERSHIP**

DB 329 P 247  
DB 372 P 248  
PLAT 22487 AC

**END PROJ. 0684-016-180, B626**

STA. 19+31.00

SEE STD. WP-1 FOR PAVEMENT WIDENING

R.R. Signal Box

4-FIXED OBJECT ATTACHMENTS  
FOR BRIDGE  
STD. GR-FOA-2 REQ'D.

**L.W. HUGHES**

DB 295 P 543  
PLAT DB 191 P 441  
2850 AC.

**END PROJ. 0684-016-180, B626**

STA. 20+69.00

PERM. DRAIN ESMT REQ'D FOR MAINT. OF OUTFALL APPROX. 50' L x 20' W

**L.W. HUGHES**

DB 295 P 541  
3 AC.

**END PROJ. 0684-016-180, C501**

STA. 26+00.00

**DESIGN FEATURES RELATING TO CONSTRUCTION OR SUBJECT TO CHANGE AS DEMAND NECESSARY BY THE DEPARTMENT.**

A. 34'-9.40' LT  
P. 1.18  
L. 1.93 89  
R. 318 31  
PC. +20-74.12  
PT. +2216801

**OFF. REV.**

A. 24'-03'08" LT  
T. 1.22 058  
L. 240.551  
R. 572 958  
PC. +22.62.47  
PT. +2510239 BK  
L. 5180  
E. 4.4 MPH

**THESE PLANS ARE DIMENSIONED AND SET OUT TO BE USED FOR ANY TYPE OF CONSTRUCTION**

**134-B**

NO.	DATE	REVISION
1	5-4-31	Change 5-4-31

NO.	DATE	REVISION
1	5-4-31	Change 5-4-31

NO.	DATE	REVISION
1	5-4-31	Change 5-4-31

NO.	DATE	REVISION
1	5-4-31	Change 5-4-31