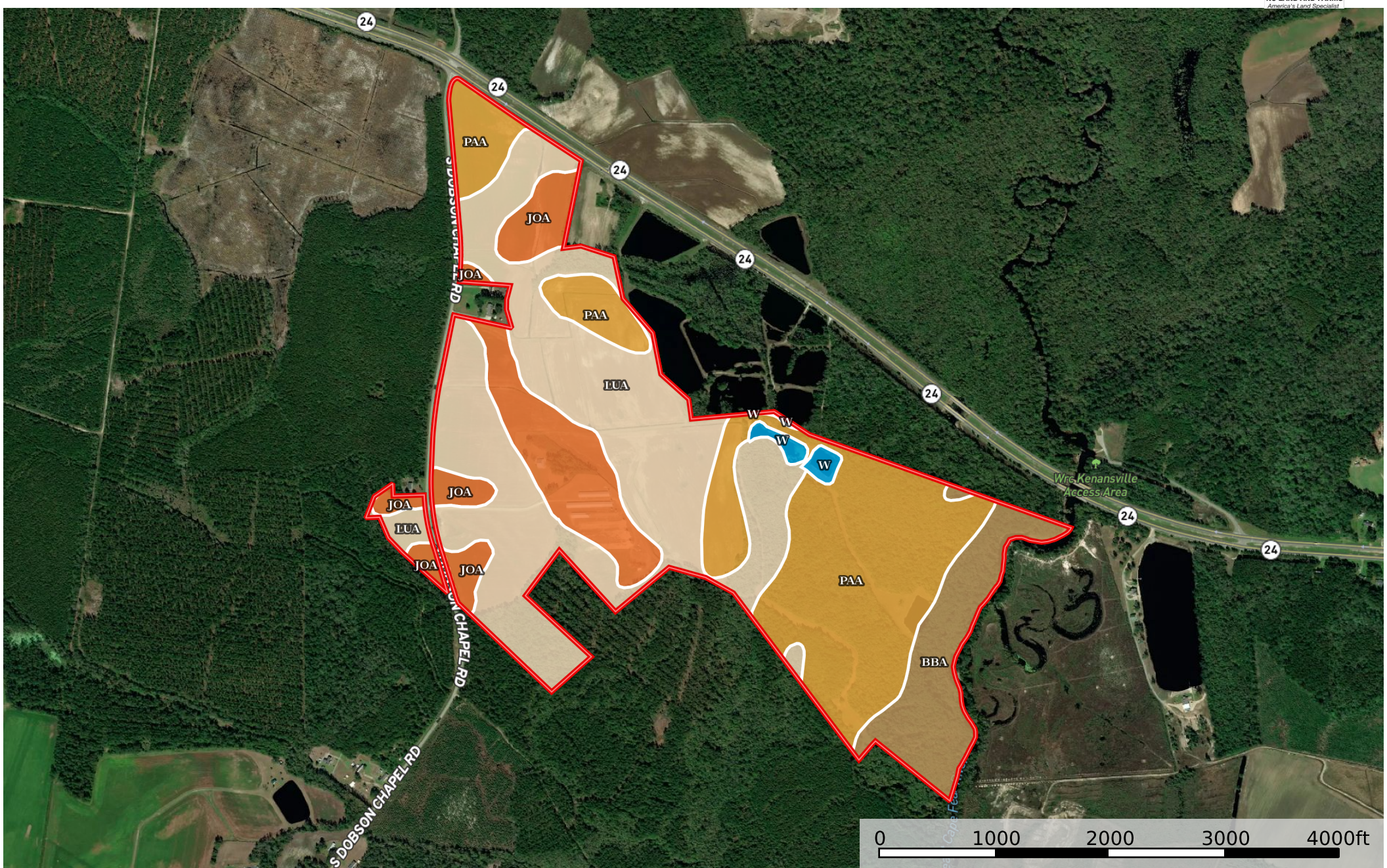


290 ac Patricia Quinn Duplin

North Carolina, AC +/-



Boundary

|  All Polygons 302.43 ac

SOIL CODE	SOIL DESCRIPTION	ACRES	%	CPI	NCCPI	CAP
LuA	Lumbee sandy loam, 0 to 1 percent slopes, rarely flooded	127.48	42.15	0	54	6w
PaA	Pactolus fine sand, 0 to 3 percent slopes	94.86	31.36	0	41	3s
JoA	Johns fine sandy loam, 0 to 2 percent slopes	45.76	15.13	0	70	2w
BbA	Bibb sandy loam, 0 to 1 percent slopes, frequently flooded	30.81	10.19	0	50	5w
W	Water	3.52	1.16	0	-	8w
TOTALS		302.46(*)	100%	-	51.3	4.38

(*) Total acres may differ in the second decimal compared to the sum of each acreage soil. This is due to a round error because we only show the acres of each soil with two decimal.

|  Boundary 296.49 ac

SOIL CODE	SOIL DESCRIPTION	ACRES	%	CPI	NCCPI	CAP
LuA	Lumbee sandy loam, 0 to 1 percent slopes, rarely flooded	124.69	42.05	0	54	6w
PaA	Pactolus fine sand, 0 to 3 percent slopes	94.86	31.99	0	41	3s
JoA	Johns fine sandy loam, 0 to 2 percent slopes	42.61	14.37	0	70	2w
BbA	Bibb sandy loam, 0 to 1 percent slopes, frequently flooded	30.81	10.39	0	50	5w
W	Water	3.52	1.19	0	-	8w
TOTALS		302.46(*)	100%	-	51.08	4.39

(*) Total acres may differ in the second decimal compared to the sum of each acreage soil. This is due to a round error because we only show the acres of each soil with two decimal.

|  Boundary 5.94 ac

SOIL CODE	SOIL DESCRIPTION	ACRES	%	CPI	NCCPI	CAP
JoA	Johns fine sandy loam, 0 to 2 percent slopes	3.15	52.94	0	70	2w
LuA	Lumbee sandy loam, 0 to 1 percent slopes, rarely flooded	2.79	46.89	0	54	6w
TOTALS		302.46(*)	100%	-	62.38	3.88









(*) Total acres may differ in the second decimal compared to the sum of each acreage soil. This is due to a round error because we only show the acres of each soil with two decimal.

Capability Legend

Increased Limitations and Hazards

Decreased Adaptability and Freedom of Choice Users

Land, Capability

								
	1	2	3	4	5	6	7	8
'Wild Life'	•	•	•	•	•	•	•	•
Forestry	•	•	•	•	•	•	•	
Limited	•	•	•	•	•	•	•	
Moderate	•	•	•	•	•	•		
Intense	•	•	•	•	•			
Limited	•	•	•	•				
Moderate	•	•	•					
Intense	•	•						
Very Intense	•							

Grazing Cultivation

(c) climatic limitations (e) susceptibility to erosion

(s) soil limitations within the rooting zone (w) excess of water