



North Relative to D.B. 739, Pg. 784

NOTE: The private ingress-egress easement shown hereon shall remain private and not become a public ingress-egress easement.

Lucinda Sullivan
D.B. 287, Pg. 326
M.B. 4, Pg. 60

NOTES:

1. All lot corners and points on edge of easment, as shown are New Iron Pipes, unless otherwise noted.
2. Points in centerline of easment are computed points.
3. All points in centerline of SR 1500 are EPK's, unless otherwise noted.
4. Location of branches is approximate.
5. Reference - D.B. 739, Pg. 784
6. There is a buried fiber optic cable near northern right of way for S.R. 1509.

Shirley Willis
D.B. 587, Pg. 648

SR 1500

Pamela D. Byrd
D.B. 652, Pg. 147

Alice Williams
D.B. 492, Pg. 23

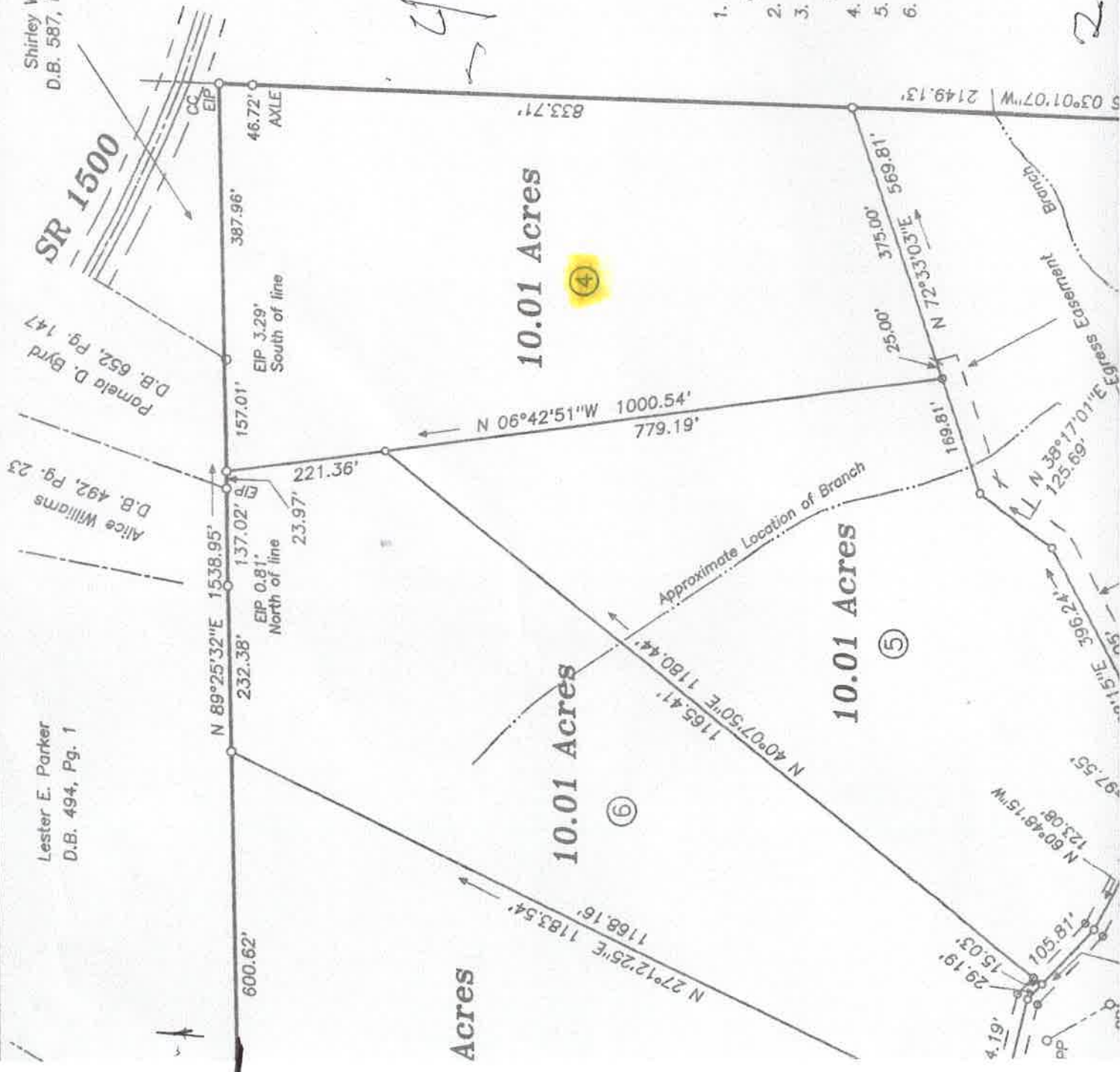
Lester E. Parker
D.B. 494, Pg. 1

10.01 Acres

10.01 Acres

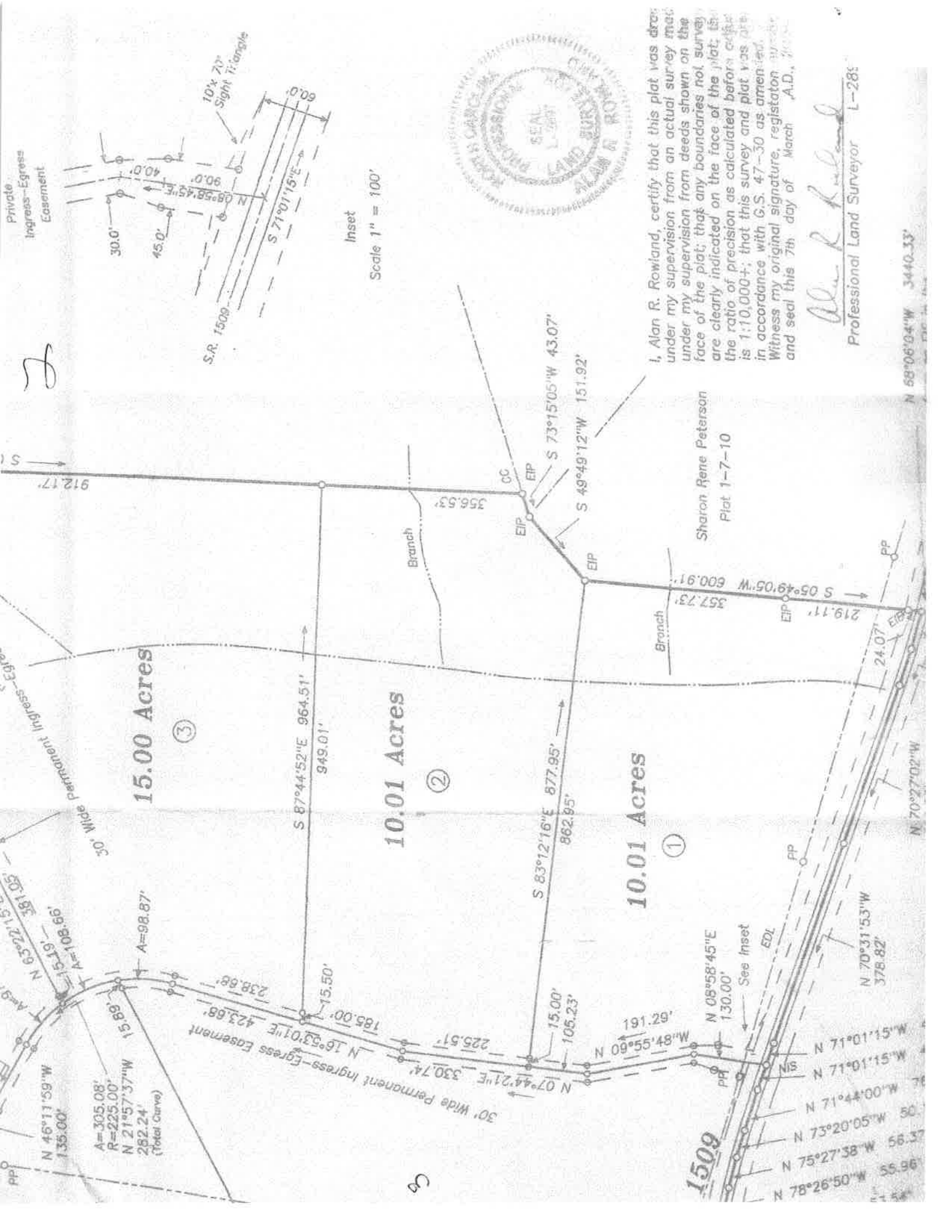
10.01 Acres

Acres



2

Private



I, Alan R. Rowland, certify that this plat was drawn under my supervision from an actual survey made under my supervision from deeds shown on the face of the plat; that any boundaries not surveyed are clearly indicated on the face of the plat; that the ratio of precision as calculated before closing is 1:10,000+; that this survey and plat was prepared in accordance with G.S. 47-30 as amended. Witness my original signature, registration number and seal this 7th day of March, A.D., 2008.

Alan R. Rowland
 Professional Land Surveyor L-285

N 58°06'04"W 3440.33'

$A=305.08'$
 $R=225.00'$
 $N 21^{\circ}57'37''W$
 $282.24'$
 (Total Curve)

$N 07^{\circ}44'21''E 330.74'$
 $N 16^{\circ}53'01''E 423.68'$
 $N 08^{\circ}58'45''E 130.00'$
 $N 70^{\circ}31'53''W 376.82'$
 $N 70^{\circ}27'02''W$

1509

See Inset

EDL

5