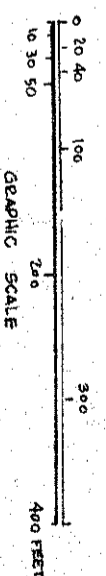
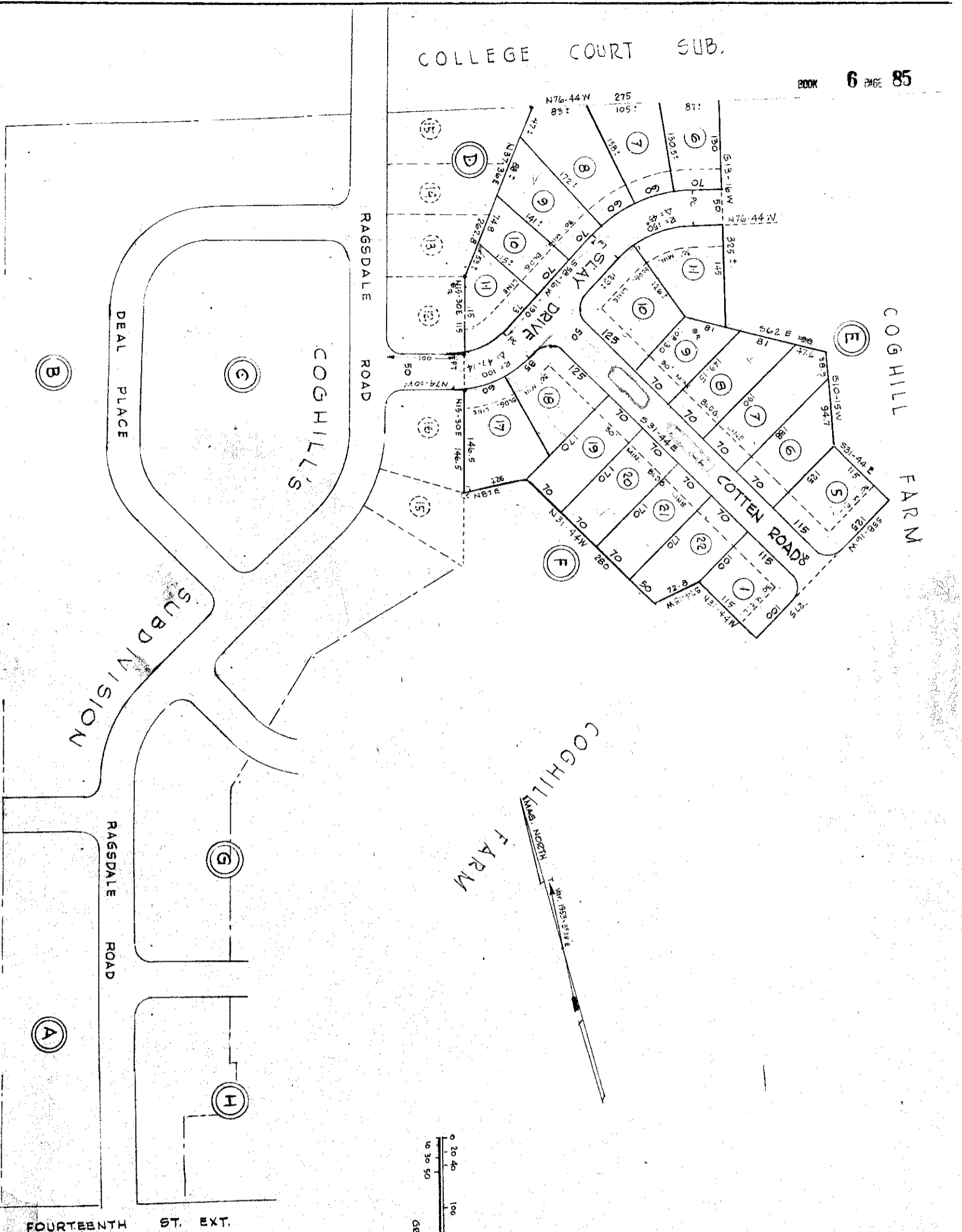


COLLEGE COURT SUB.



NOTES

- 1. ALL DIMENSIONS ON CORNER LOTS ARE TO THE P.I.
- 2. ALL CORNER RADII = 25 FT.
- 3. LOT LINES INTERSECT STREETS AT 90°.
- 4. MEASUREMENTS ON CURVES ARE CHORD DISTANCES.
- 5. CURVE DATA SHOWN REPRESENTS THE INSIDE CURVE OF THE STREET RIGHT-OF-WAY.
- 6. ALL LOT LINES ON CURVES PRODUCE FROM CENTER OF CURVE

**COGHILL SUBDIVISION**  
 ADDITION I  
 NORTH CAROLINA  
 GREENVILLE

HENRY L. RIVERS  
 THOMAS W. RIVERS  
 ENGINEERS  
 CONSULTING ENGINEERS  
 GREENVILLE, N. C.

DESIGN T.R.  
 CHECKED T.R.  
 SCALE 1"=100 FT.

**CERTIFICATE**  
 THIS IS TO CERTIFY THAT I, *T.M. Rivers*, MADE THIS MAP FROM MY OWN ACTUAL SURVEY AND THAT TO THE BEST OF MY KNOWLEDGE & BELIEF THE SAME IS TRUE AND ACCURATE IN ALL RESPECTS.

*T.M. Rivers*  
 CIVIL ENGINEER

**SOURCE OF TITLE**  
 FROM BOOK # 24 PAGE 229  
 AS RECORDED IN PITT COUNTY N.C. REGISTRY AT GREENVILLE, N.C.

**OWNERS STATEMENT**  
 THIS IS EVIDENCE THAT THIS SUBDIVISION IS MADE AT OUR REQUEST.  
*Thomas W. Rivers*  
*Henry L. Rivers*

**APPROVALS**  
 CHAIRMAN GREENVILLE CITY PLANNING BOARD  
 CITY ENGINEER CITY OF GREENVILLE, N.C.  
 DATE *Oct 5, 1954*

**RECEIVED**  
 REGISTER OF DEEDS  
 PITT COUNTY, N.C.  
 OCT 7 PM 4:03  
 Book - 6  
 Page - 85

Let the instrument with the certificate be registered, this the 7th day of October, 1954.  
 CLERK OF SUPERIOR COURT