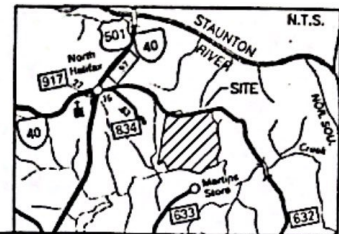


NOTES: 1. ALL EASEMENTS, ENCROACHMENTS, AND/OR IMPROVEMENTS MAY NOT BE SHOWN.
 2. T.M. NO. 2MM-5-315, 316 & 317
 3. IRONS ON ALL CORNERS UNLESS OTHERWISE NOTED

WILLIAM W. DICKERSON, JR.
 LAND SURVEYOR
 500 Court Street P.O. Box 112
 Appomattox, Virginia 24522

LOCATION MAP



Curve	Radius	Length	Delta	Chord	Chord Bear.
C1	574.48'	150.06'	34°59'54"	345.43'	S 79°05'13" E
C2	8614.37'	291.62'	1°56'23"	291.61'	S 47°33'11" E
C3	8614.37'	124.66'	0°49'50"	124.66'	S 48°56'17" E
C4	548.88'	152.27'	15°53'43"	151.79'	S 57°18'04" E
C5	548.88'	155.28'	16°15'59"	155.25'	S 57°22'43" E
C6	1789.34'	166.04'	5°19'00"	165.98'	S 78°31'05" E
C7	6895.49'	210.38'	1°44'53"	210.38'	S 75°02'27" E
C8	6895.49'	72.96'	0°36'23"	72.96'	S 76°43'00" E
C9	1929.86'	312.43'	8°16'33"	312.09'	S 81°39'27" E
C10	8574.37'	70.64'	0°28'19"	70.64'	N 48°49'10" W
C11	534.48'	243.88'	26°27'23"	243.70'	N 37°24'19" W

SOURCE OF TITLE: CLAYTON C. BRYANT SR.
 D.B. 827 P. 709 & DEED NO. 050022911

THE SUBDIVISION SHOWN ON THIS PLAT IS WITH THE FREE CONSENT AND ACCORDANCE WITH THE DESIRES OF THE UNDERSIGNED OWNERS.

Clayton C. Bryant Sr.
 OWNER DATE 5-16-05

Christina S. Sibley, A NOTARY PUBLIC IN AND FOR Appomattox County, in the State of Virginia, DO HEREBY CERTIFY THAT THE OWNERS WHOSE NAMES ARE SIGNED HEREON HAVE ACKNOWLEDGED THE SAME BEFORE ME THIS 12th DAY OF August, 2005. MY COMMISSION EXPIRES 12/31/2006.

THOMAS A. TAYLOR
 D.B. 444 P. 335
 plat. D.B. 333 P. 382
 T.M. # 2MM-5-328

JESSE L. COOK
 D.B. 336 P. 380
 plat. D.B. 306 P. 382
 T.M. # 2MM-5-328

KAREN S. & RYONDA S. TELMAN
 D.B. 587 P. 525 & D.B. 407 P. 171
 plat. D.B. 310 P. 29
 T.M. # 2MM-5-329

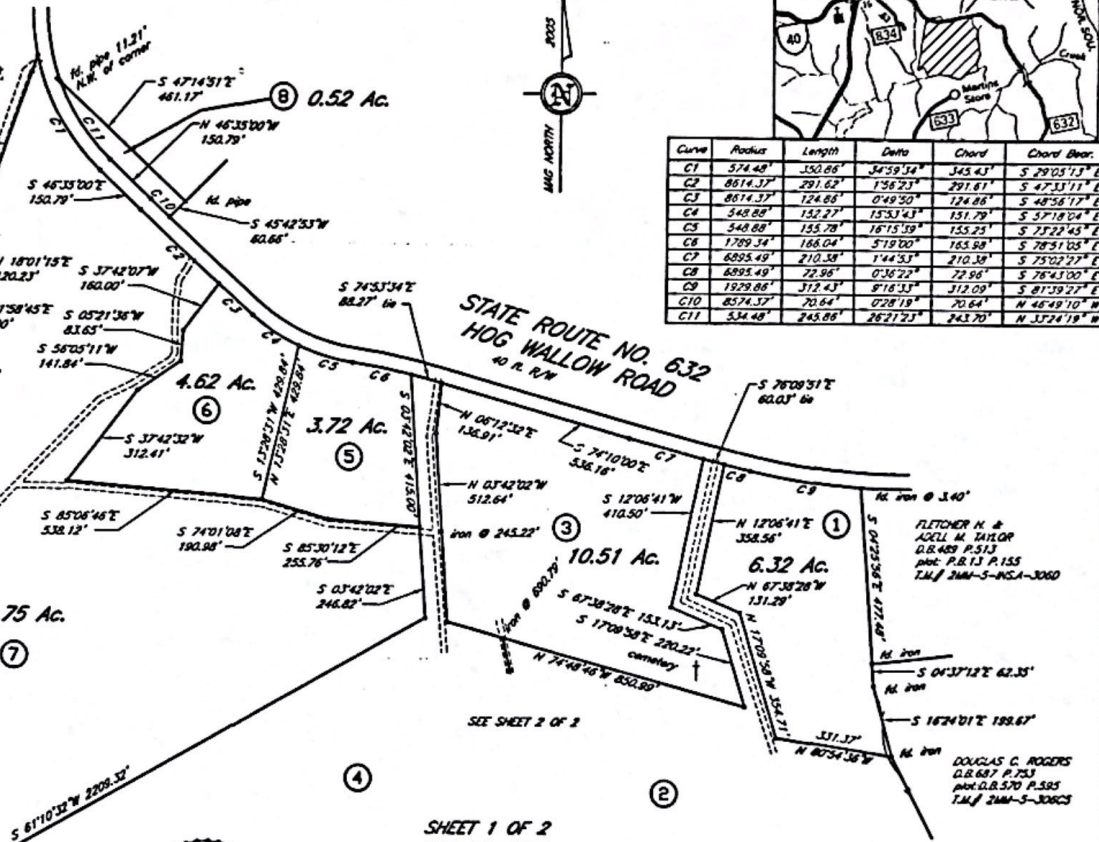
THOMAS S. NASH EDAL
 W.B. 202 P. 460
 plat. D.B. 310 P. 29
 T.M. # 2MM-5-330

LEWIS S. WILSON EDAL
 D.B. 414 P. 745
 plat. D.B. 310 P. 29
 T.M. # 2MM-5-331

FLETCHER H. & AGILL W. TAYLOR
 D.B. 406 P. 560 P. 29
 plat. D.B. 310 P. 29
 T.M. # 2MM-5-317B

FLETCHER H. & AGILL W. TAYLOR
 D.B. 485 P. 513
 plat. P.B. 13 P. 155
 T.M. # 2MM-5-NSA-3000

DOUGLAS C. ROGERS
 D.B. 687 P. 753
 plat. D.B. 570 P. 585
 T.M. # 2MM-5-30625



SHEET 1 OF 2
 SCALE: 1IN. = 200FT.

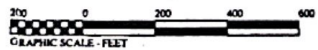
CHILDREY CREEK
 SUBDIVISION

SURVEYED FOR: CLAYTON C. BRYANT SR.
 STAUNTON DISTRICT HALIFAX COUNTY
 VIRGINIA
 AUGUST 11, 2005

Filed for record in the Clerk's Office of the
 Circuit Court of Halifax County Va., on the
 26 day of Sept 2006
Belinda J. Williams Clerk

This plat approved by the Planning Commission
 of Halifax County this 15th day of December, 2005.

Belinda J. Williams
 Authorized Agent



Plat Book 24 Pg 158

Scanned with CamScanner

Plat Book 24 Pg 158