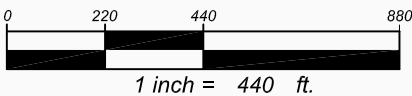


56113 State Hwy 56
 West Concord, MN 55985
 507 527-2294
 www.ellingsoncompanies.com

BGF_Gum Neck
 Revision: Final
 04-10-18
 Job# 184106
 Drawn by: M. Solma/B. Hanten

- Existing Tile ----
- Ditches & WW ----
- Parcel Boundry ----
- Elec & Tele Cable ----
- Gas Line ---- Trees

<ul style="list-style-type: none"> 0 Ft. 3" Perf ---- 59249 Ft. 4" Perf ---- 0 Ft. 5" Perf ---- 0 Ft. 6" Perf ---- 0 Ft. 8" Perf ---- 0 Ft. 10" Perf ---- 0 Ft. 12" Perf ---- 0 Ft. 15" Perf ---- 0 Ft. 18" Perf ---- 0 Ft. 12" DW ---- 0 Ft. 15" DW ---- 0 Ft. 18" DW ---- 	<ul style="list-style-type: none"> 0 Ft. 3" NP ---- 0 Ft. 4" NP ---- 0 Ft. 5" NP ---- 357 Ft. 6" NP ---- 685 Ft. 8" NP ---- 1235 Ft. 10" NP ---- 0 Ft. 12" NP ---- 0 Ft. 15" NP ---- 0 Ft. 18" NP ---- 	<ul style="list-style-type: none"> 0 Ft. 3" Sock ---- 0 Ft. 4" Sock ---- 0 Ft. 5" Sock ---- 0 Ft. 6" Sock ---- 0 Ft. 8" Sock ---- 0 Ft. 10" Sock ---- 0 Ft. 12" Sock ---- 0 Ft. 15" Sock ---- 0 Ft. 18" Sock ----
---	---	--

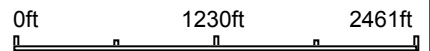


<u>Black Gold Farms</u>		<u>Renter:</u>	
State: NC	County: Tyrell	Twp: Gum Neck	Sec:
Acres: 36	Spacings: 25	D-C: 1/2	

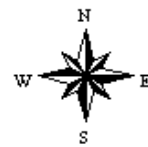
Aerial Map



map center: 35.710202, -76.142110

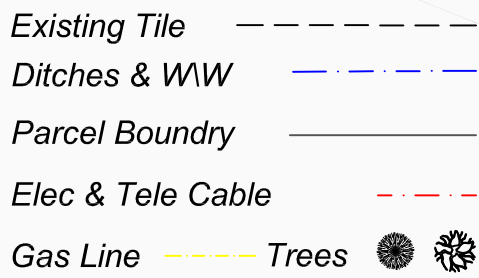


Tyrrell County
North Carolina

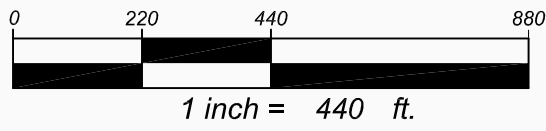


3/13/2018

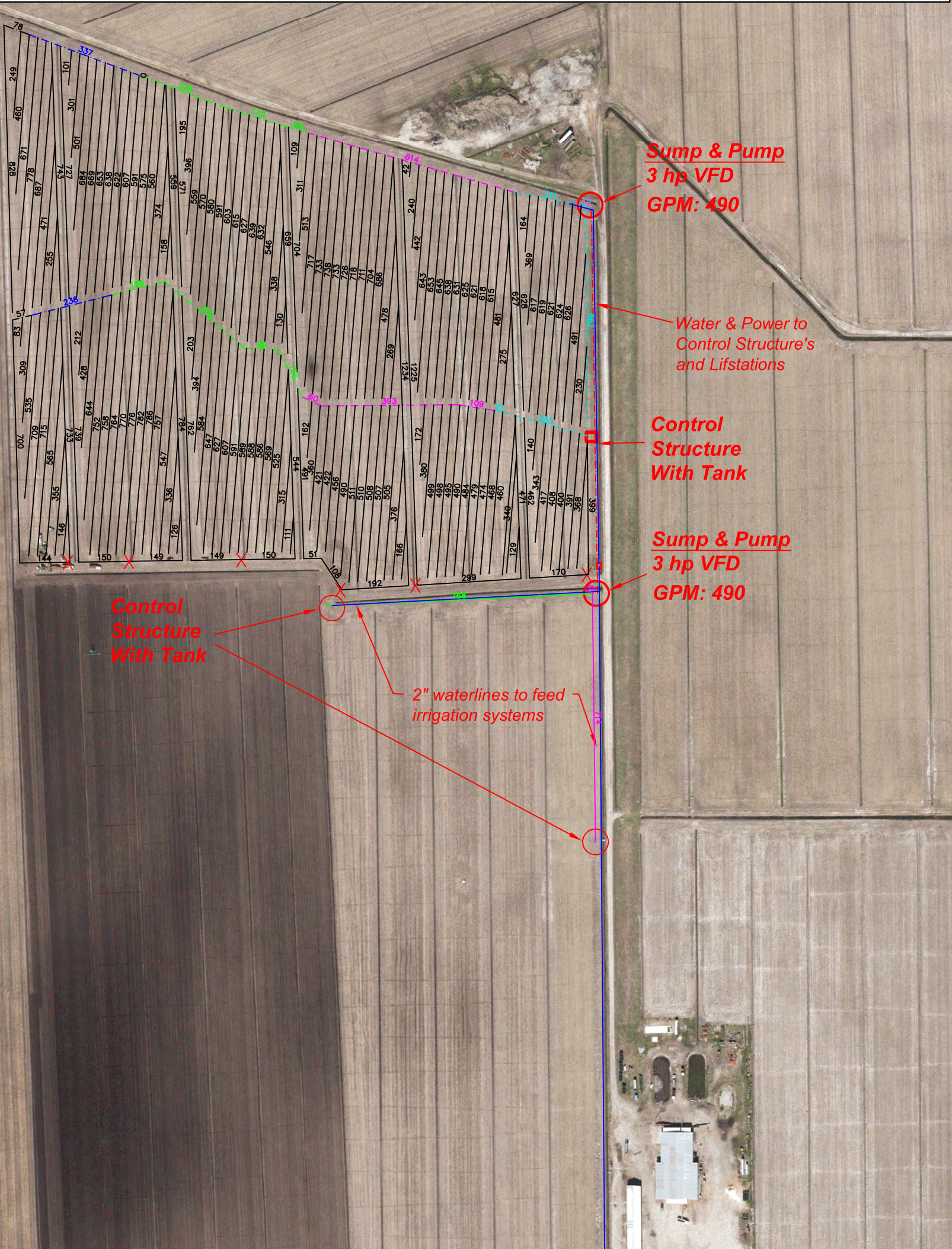
Field borders provided by Farm Service Agency as of 5/21/2008.



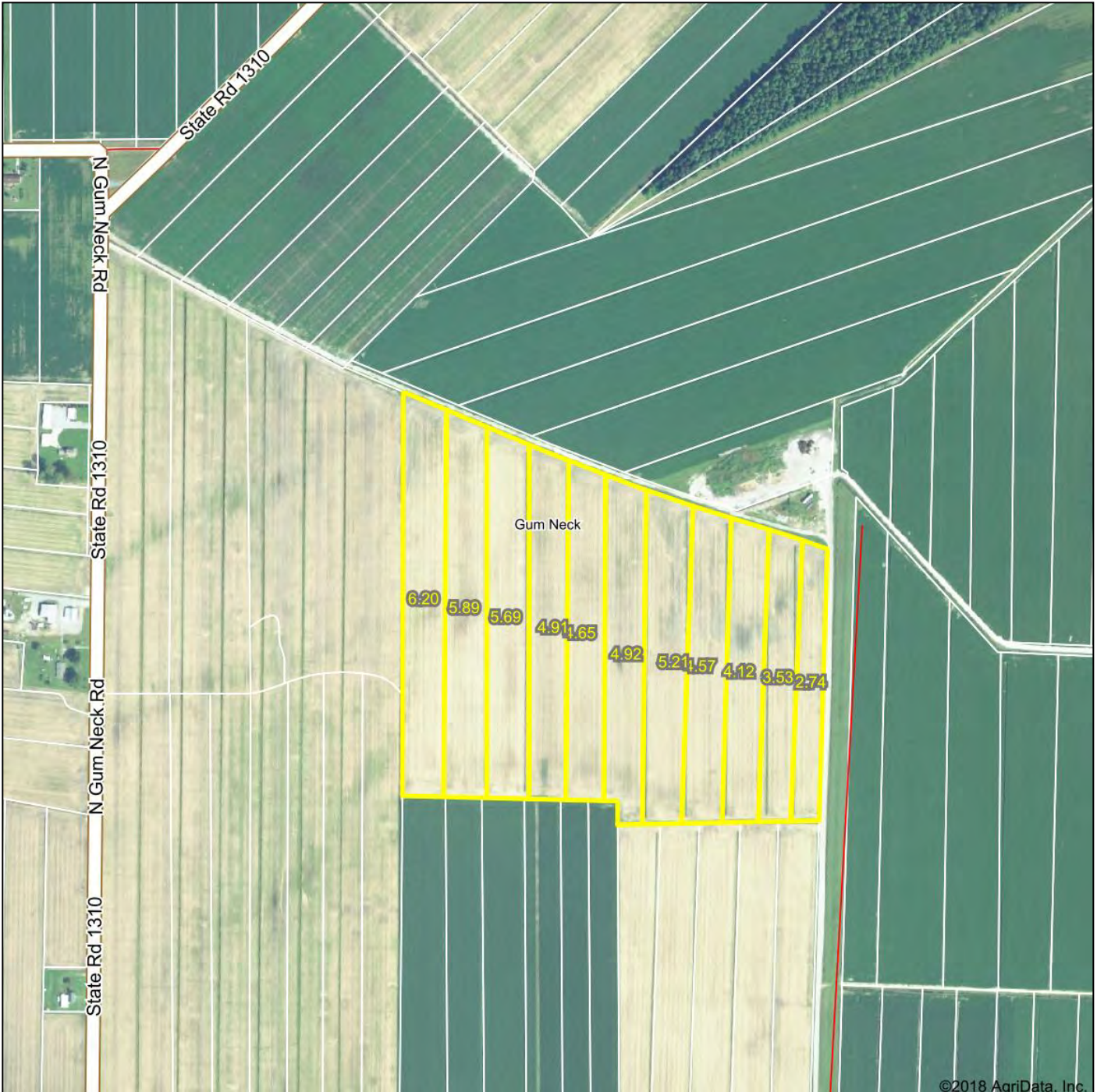
0 Ft. 3" Perf		0 Ft. 3" NP		0 Ft. 3" Sock	
85470 Ft. 4" Perf		135 Ft. 4" NP		0 Ft. 4" Sock	
0 Ft. 5" Perf		0 Ft. 5" NP		0 Ft. 5" Sock	
0 Ft. 6" Perf		575 Ft. 6" NP		0 Ft. 6" Sock	
768 Ft. 8" Perf		1221 Ft. 8" NP		0 Ft. 8" Sock	
729 Ft. 10" Perf		1176 Ft. 10" NP		0 Ft. 10" Sock	
0 Ft. 12" Perf		1150 Ft. 12" NP		0 Ft. 12" Sock	
0 Ft. 15" Perf		0 Ft. 15" NP		0 Ft. 15" Sock	
0 Ft. 18" Perf		0 Ft. 18" NP		0 Ft. 18" Sock	
15 Ft. 12" DW					
0 Ft. 15" DW					
0 Ft. 18" DW					



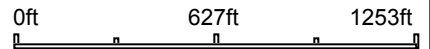
Black Gold Farms Renter:
 State: NC County: Tyrell Twp: Gum Neck Sec: 1
 Acres: 52 Spacings: 25 D-C: 1/2



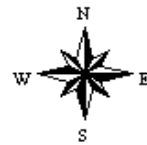
Aerial Map



map center: 35.740479, -76.146999



Tyrrell County
North Carolina



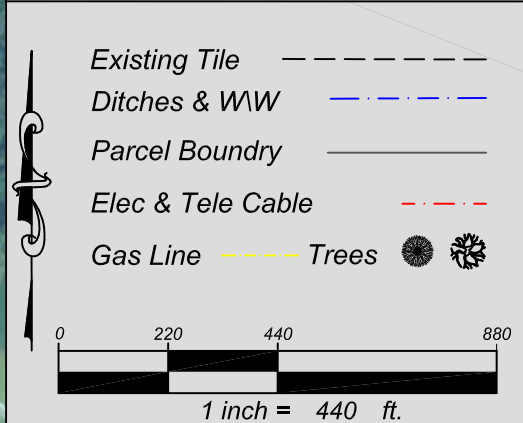
3/13/2018

Field borders provided by Farm Service Agency as of 5/21/2008.



56113 State Hwy 56
 West Concord, MN 55985
 507 527-2294
 www.ellingsoncompanies.com

BGF_Gumneck2019_PROJ1_FINAL
 Revision:
 04-23-19
 Job# 194225
 Drawn by: M. Solma



0 Ft. 3" Perf	0 Ft. 3" NP	0 Ft. 3" Sock
206370 Ft. 4" Perf	0 Ft. 4" NP	0 Ft. 4" Sock
0 Ft. 5" Perf	0 Ft. 5" NP	0 Ft. 5" Sock
0 Ft. 6" Perf	0 Ft. 6" NP	0 Ft. 6" Sock
0 Ft. 8" Perf	305 Ft. 8" NP	0 Ft. 8" Sock
0 Ft. 10" Perf	526 Ft. 10" NP	0 Ft. 10" Sock
0 Ft. 12" Perf	510 Ft. 12" NP	0 Ft. 12" Sock
0 Ft. 15" Perf	0 Ft. 15" NP	0 Ft. 15" Sock
0 Ft. 18" Perf	0 Ft. 18" NP	0 Ft. 18" Sock
513 Ft. 12" DW		
1239 Ft. 15" DW		
0 Ft. 18" DW		

Black Gold Farms Renter:
 State: NC County: Tyrell Twp: Gum Neck Sec:
 Acres: 120 Spacings: 25 D-C: 3/8

Aerial Map

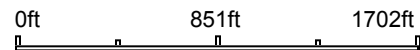
FAA Obstructions WARNING: Map is dated, incomplete, and is in no way a substitute for visual confirmation. Use caution! All data has limitations of accuracy.



©2022 AgriData, Inc.



Map Center: 35.735484, -76.160406



Tyrrell County
North Carolina



Field borders provided by Farm Service Agency as of 5/21/2008.