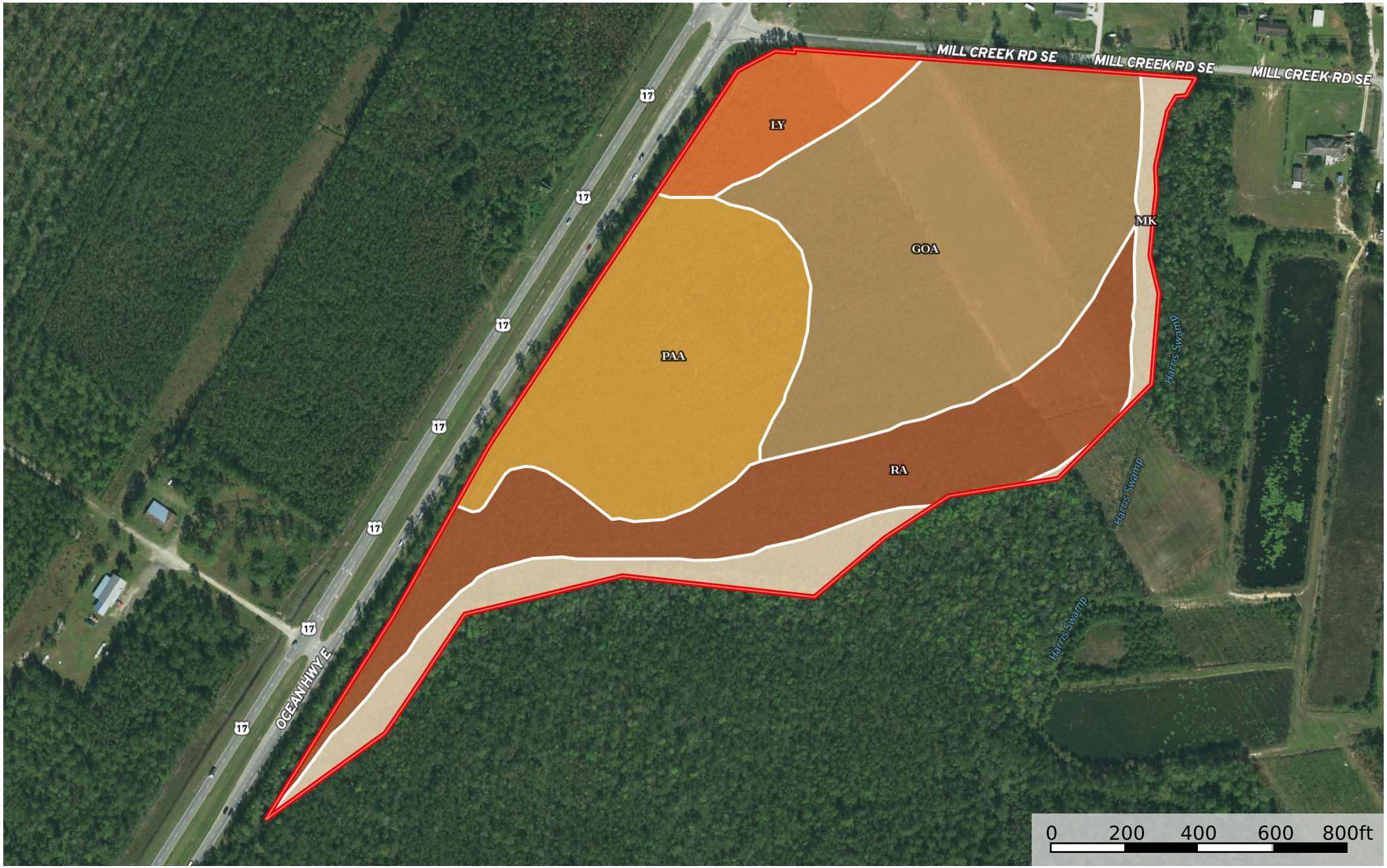


**46.84 Mercer Brunswick BC**  
Brunswick County, North Carolina, 46.84 AC +/-



 Boundary



|  Boundary 48.49 ac

SOIL CODE	SOIL DESCRIPTION	ACRES	%	CPI	NCCPI	CAP
GoA	Goldsboro fine sandy loam, 0 to 2 percent slopes	17.85	36.81	0	62	2w
PaA	Pactolus fine sand, 0 to 2 percent slopes	11.5	23.72	0	41	3s
Ra	Rains fine sandy loam, 0 to 2 percent slopes, Atlantic Coast Flatwoods	10.97	22.62	0	68	4w
Mk	Muckalee loam	5.01	10.33	0	52	5w
Ly	Lynchburg fine sandy loam, 0 to 2 percent slopes, Atlantic Coast Flatwoods	3.16	6.52	0	41	2w
TOTALS		48.49(*)	100%	-	55.98	3.0

(\*) Total acres may differ in the second decimal compared to the sum of each acreage soil. This is due to a round error because we only show the acres of each soil with two decimal.

