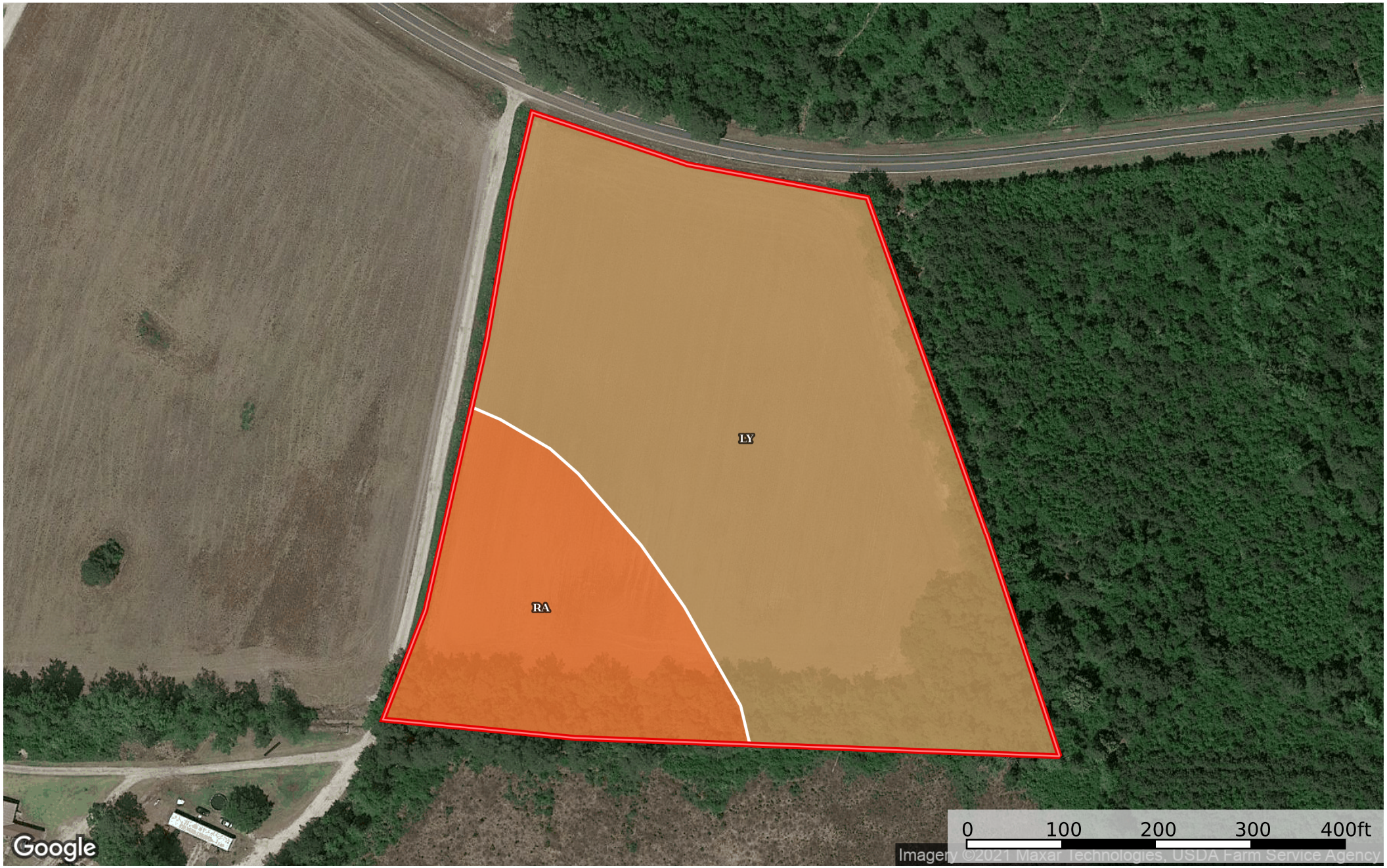


**7.42 ac (Tract 3-John L Rd) Luckys Car Lot Robeson BC**  
Robeson County, North Carolina, 7.42 AC +/-



Google

0 100 200 300 400ft  
Imagery ©2021 Maxar Technologies, USDA Farm Service Agency

 Boundary

|  Boundary 7.42 ac

SOIL CODE	SOIL DESCRIPTION	ACRES	%	CPI	NCCPI	CAP
Ly	Lynchburg sandy loam, 0 to 2 percent slopes	5.61	75.61	0	54	2w
Ra	Rains sandy loam, 0 to 2 percent slopes	1.81	24.39	0	56	4w
TOTALS		7.42(*)	100%	-	54.49	2.49









(\*) Total acres may differ in the second decimal compared to the sum of each acreage soil. This is due to a round error because we only show the acres of each soil with two decimal.

### Capability Legend

Increased Limitations and Hazards

Decreased Adaptability and Freedom of Choice Users

Land, Capability

								
	1	2	3	4	5	6	7	8
'Wild Life'	•	•	•	•	•	•	•	•
Forestry	•	•	•	•	•	•	•	
Limited	•	•	•	•	•	•	•	
Moderate	•	•	•	•	•	•		
Intense	•	•	•	•	•			
Limited	•	•	•	•				
Moderate	•	•	•					
Intense	•	•						
Very Intense	•							

### Grazing Cultivation

(c) climatic limitations (e) susceptibility to erosion

(s) soil limitations within the rooting zone (w) excess of water