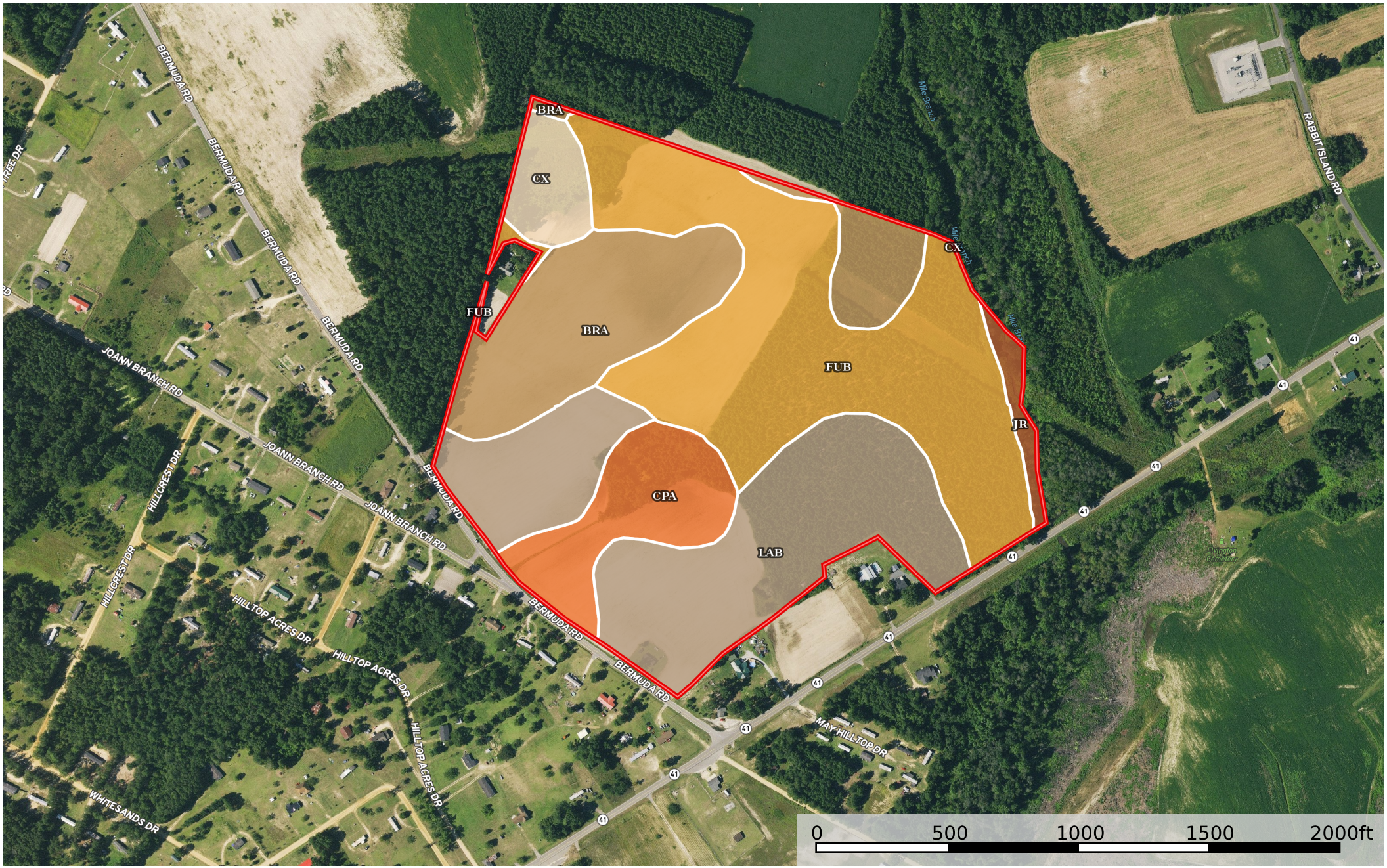


76.36 ac Sanderson Dillon BC

Dillon County, South Carolina, 76.36 AC +/-



 Boundary

|  Boundary 76.35 ac

SOIL CODE	SOIL DESCRIPTION	ACRES	%	CPI	NCCPI	CAP
FuB	Fuquay sand, 0 to 6 percent slopes	27.93	36.58	0	36	2s
LaB	Lakeland sand, 0 to 6 percent slopes	22.29	29.19	0	22	4s
BrA	Brogdon sand, 0 to 2 percent slopes	14.75	19.32	0	42	2s
CpA	Chipleay sand, 0 to 2 percent slopes	7.18	9.4	0	34	3s
Cx	Coxville fine sandy loam	2.96	3.88	0	51	3w
JR	Johnston-Rutlege association, frequently flooded	1.24	1.62	0	19	7w
TOTALS		76.36(*)	100%	-	33.18	2.8

(*) Total acres may differ in the second decimal compared to the sum of each acreage soil. This is due to a round error because we only show the acres of each soil with two decimal.

