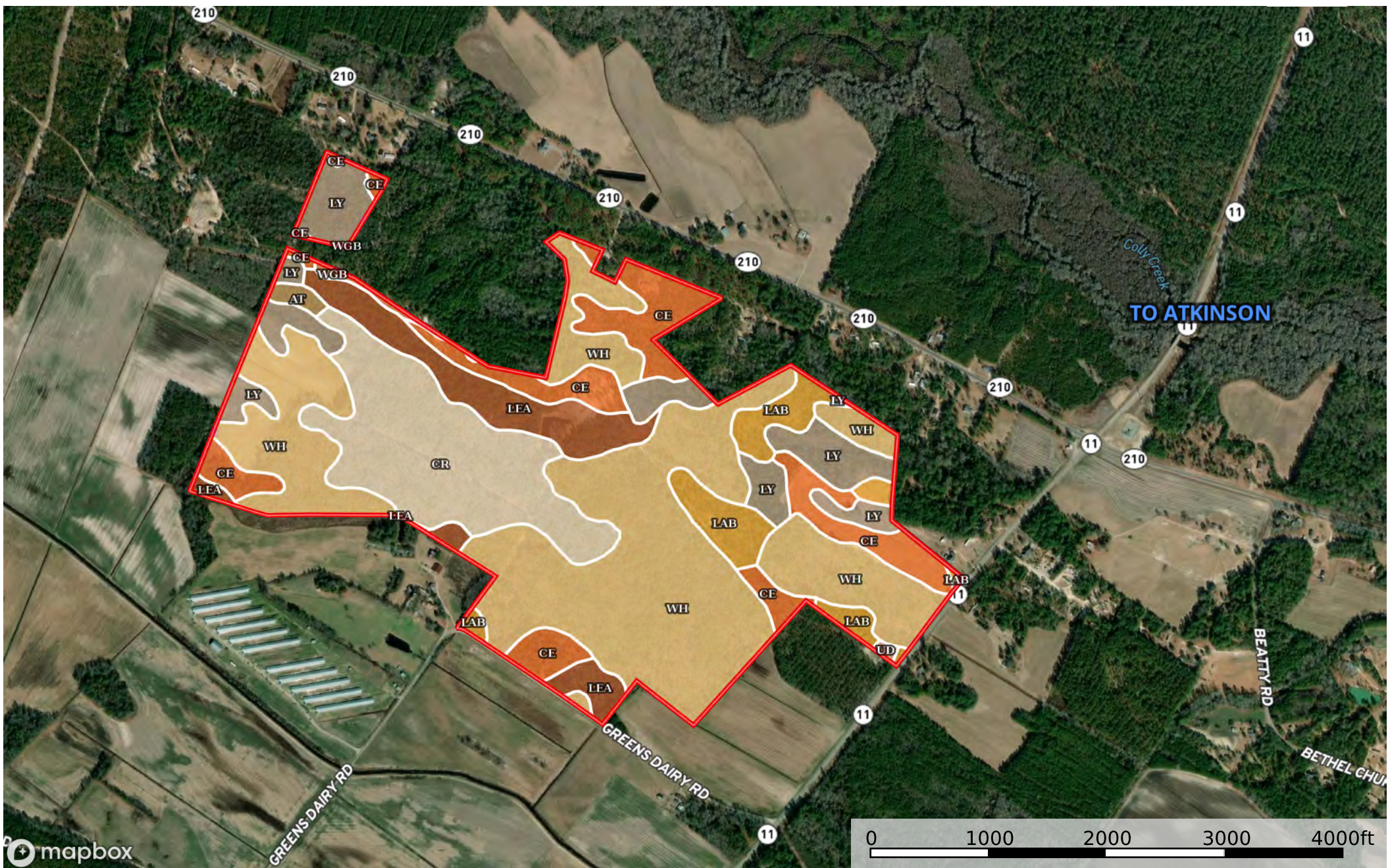


# 330.22 ac Heritage Farm Hunting Preserve Bladen BC

Bladen County, North Carolina, 330.22 AC +/-



Boundary

|  All Polygons 328.37 ac

SOIL CODE	SOIL DESCRIPTION	ACRES	%	NCCPI	CAP
Wh	Wasda muck	148.16	45.12	82	3w
Cr	Croatan muck, ponded, 0 to 2 percent slopes	52.64	16.03	31	7w
Ce	Centenary sand	42.78	13.03	43	3s
Ly	Lynn Haven and Torhunta soils	33.95	10.34	62	4w
LeA	Leon sand, 0 to 3 percent slopes	27.79	8.46	32	4w
LaB	Lakeland sand, 1 to 7 percent slopes	19.31	5.88	35	4s
At	Augusta sandy loam	1.84	0.56	76	3w
WgB	Wakulla sand, 1 to 6 percent slopes	1.4	0.43	23	3s
Ud	Udorthents, loamy	0.5	0.15	68	7e
TOTALS		328.39(*)	100%	59.37	3.89

(\*) Total acres may differ in the second decimal compared to the sum of each acreage soil. This is due to a round error because we only show the acres of each soil with two decimal.

|  Boundary 320.04 ac

SOIL CODE	SOIL DESCRIPTION	ACRES	%	NCCPI	CAP
Wh	Wasda muck	148.16	46.29	82	3w
Cr	Croatan muck, ponded, 0 to 2 percent slopes	52.64	16.45	31	7w
Ce	Centenary sand	41.83	13.07	43	3s
LeA	Leon sand, 0 to 3 percent slopes	27.79	8.68	32	4w
Ly	Lynn Haven and Torhunta soils	26.59	8.31	62	4w
LaB	Lakeland sand, 1 to 7 percent slopes	19.31	6.03	35	4s
At	Augusta sandy loam	1.84	0.57	76	3w
WgB	Wakulla sand, 1 to 6 percent slopes	1.38	0.43	23	3s
Ud	Udorthents, loamy	0.5	0.16	68	7e
TOTALS		328.39(*)	100%	59.36	3.89

(\*) Total acres may differ in the second decimal compared to the sum of each acreage soil. This is due to a round error because we only show the acres of each soil with two decimal.

|  Boundary 8.33 ac









SOIL CODE	SOIL DESCRIPTION	ACRES	%	NCCPI	CAP
Ly	Lynn Haven and Torhunta soils	7.36	88.25	62	4w
Ce	Centenary sand	0.95	11.39	43	3s
WgB	Wakulla sand, 1 to 6 percent slopes	0.02	0.24	23	3s
TOTALS		328.39(*)	100%	59.67	3.88

(\*) Total acres may differ in the second decimal compared to the sum of each acreage soil. This is due to a round error because we only show the acres of each soil with two decimal.

## Capability Legend

Increased Limitations and Hazards

Decreased Adaptability and Freedom of Choice Users

Land, Capability								
	1	2	3	4	5	6	7	8
'Wild Life'	•	•	•	•	•	•	•	•
Forestry	•	•	•	•	•	•	•	
Limited	•	•	•	•	•	•	•	
Moderate	•	•	•	•	•	•		
Intense	•	•	•	•	•			
Limited	•	•	•	•				
Moderate	•	•	•					
Intense	•	•						
Very Intense	•							

## Grazing Cultivation

(c) climatic limitations (e) susceptibility to erosion

(s) soil limitations within the rooting zone (w) excess of water