

UP BRANCH I-2

- N25-06-35E - 58.13
- N36-17-1E - 107.64
- N17-20-4E - 34.65
- N41-29-17E - 108.01
- N62-36-20E - 58.58
- N08-34-38W - 40.03
- N15-34-54E - 91.92
- N23-01-23E - 28.40

UP BRANCH 3-1

- N05-11-52W - 34.27
- N22-07-06E - 47.89
- N18-20-44W - 30.48
- N52-43-06E - 44.96
- N36-37-02E - 50.36
- N27-11-51E - 58.20
- N64-24-16E - 41.51
- N25-06-35E - 66.87

UP BRANCH 4-3

- N01-12-42E - 26.88
- N07-38-46W - 107.46
- N23-11-25E - 49.40
- N05-11-52W - 50.04

UP BRANCH 5-4

- N09-20-16W - 103.86
- N01-12-42E - 34.82

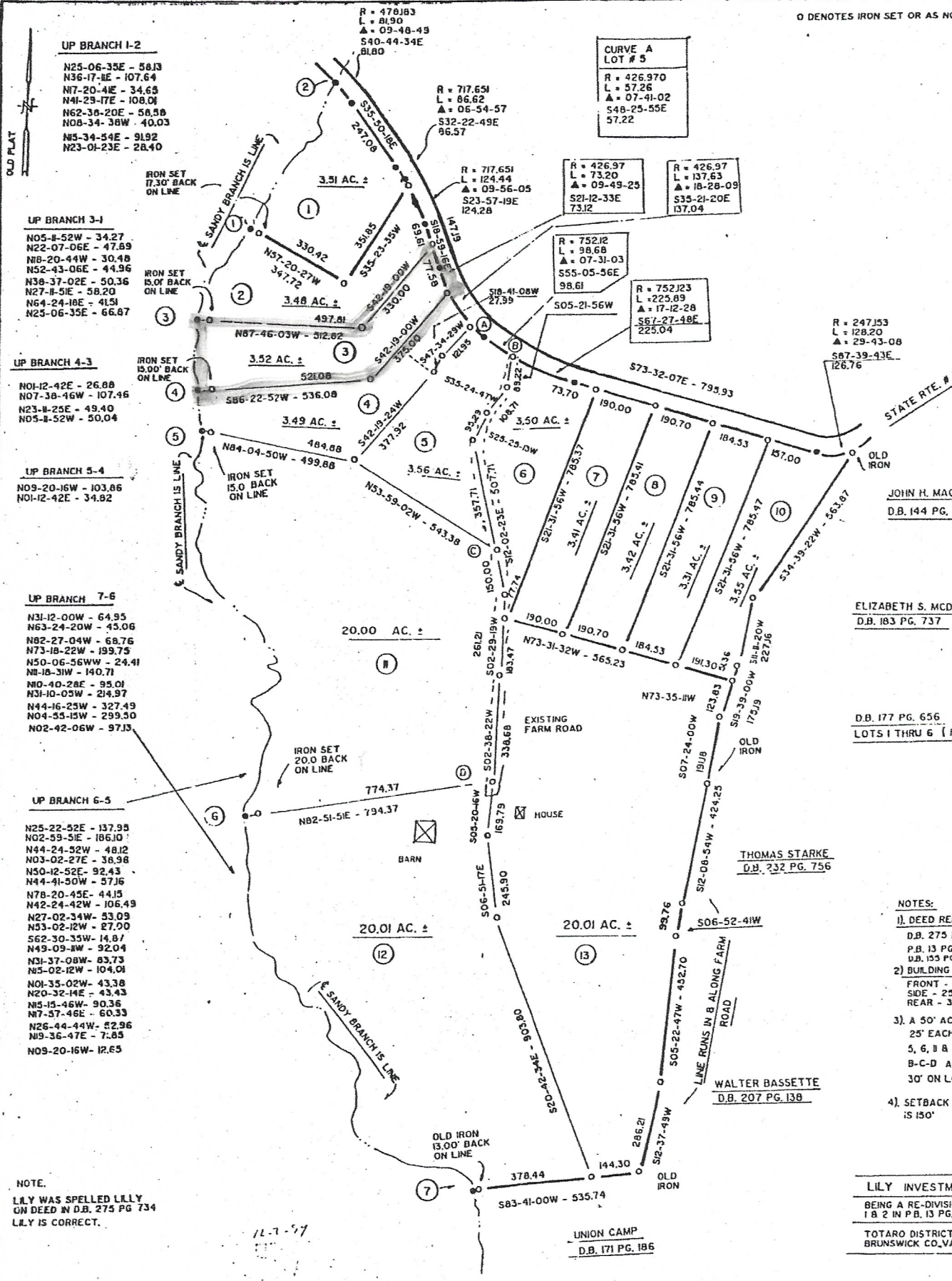
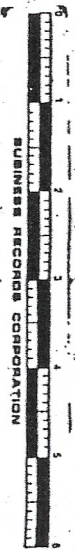
UP BRANCH 7-6

- N31-12-00W - 64.95
- N63-24-20W - 45.06
- N82-27-04W - 68.76
- N73-18-22W - 193.75
- N50-06-56WW - 24.41
- N8-18-31W - 140.71
- N0-40-28E - 95.01
- N31-10-03W - 214.97
- N44-16-25W - 327.49
- N04-35-13W - 299.50
- N02-42-06W - 97.13

UP BRANCH 6-5

- N25-22-52E - 137.95
- N02-59-51E - 186.10
- N44-24-52W - 48.12
- N03-02-27E - 38.98
- N50-12-52E - 92.43
- N44-41-50W - 57.16
- N78-20-45E - 44.15
- N42-24-42W - 106.49
- N27-02-34W - 53.09
- N53-02-12W - 27.00
- 562-30-35W - 14.87
- N49-09-11W - 92.04
- N31-37-08W - 83.73
- N15-02-12W - 104.01
- N01-35-02W - 43.38
- N20-32-14E - 43.43
- N15-14-46W - 90.36
- N7-57-46E - 60.33
- N26-44-44W - 52.96
- N19-36-47E - 7.85
- N09-20-16W - 12.65

NOTE.  
 LLY WAS SPELLED LLLY  
 ON DEED IN D.B. 275 PG 734  
 LLY IS CORRECT.



CURVE A  
 LOT # 5  
 R = 426.970  
 L = 57.26  
 Δ = 07-41-02  
 548-25-55E  
 57.22

R = 426.97  
 L = 73.20  
 Δ = 09-49-29  
 S21-12-33E  
 73.12

R = 426.97  
 L = 137.63  
 Δ = 18-28-09  
 S35-21-20E  
 137.04

R = 752.12  
 L = 98.68  
 Δ = 07-31-03  
 S55-05-56E  
 98.61

R = 752.123  
 L = 225.09  
 Δ = 17-12-28  
 S67-27-48E  
 225.04

R = 247.53  
 L = 128.20  
 Δ = 29-93-08  
 S87-39-43E  
 126.76

ELIZABETH S. MCDONALD  
 D.B. 183 PG. 737

D.B. 177 PG. 656  
 LOTS 1 THRU 6 (P)

THOMAS STARKE  
 D.B. 232 PG. 756

- NOTES:
- DEED REF. D.B. 275 PG. 13 PG. 133 PG.
  - BUILDING FRONT SIDE + 25' REAR - 35'
  - A 50' AC. 25' EACH 5, 6, 11 B. B-C-D AND 30' ON LOT 15 IS 150'

LILY INVESTMENT BEING A RE-DIVISION OF LILY IN P.B. 13 PG. 133

TOTARO DISTRICT BRUNSWICK CO. VA

UNION CAMP D.B. 171 PG. 186

In the clerks office of the Circuit Court of Brunswick County, VA 12-20-94 at 3:01 p.m. This instrument was received and with the certificates annexed admitted to record. Teste *[Signature]* Clerk  
 By *[Signature]* D. Clerk

I HEREBY CERTIFY THAT THIS BOUNDARY SURVEY TO THE BEST OF MY KNOWLEDGE AND BELIEF IS CORRECT AND COMPLIES WITH THE MINIMUM STANDARDS AND PROCEDURES AS ESTABLISHED BY THE VA. STATE BOARD OF ARCHITECTS, PROFESSIONAL ENGINEERS, LAND SURVEYORS AND CERTIFIED LANDSCAPE ARCHITECTS

BENJAMIN M. EVA  
 PROFESSIONAL ENGINEER  
 SOUTH HILL, VA.

DATE	SCALE
2 DECEMBER, 1994	1" = 20'

*[Signature]*