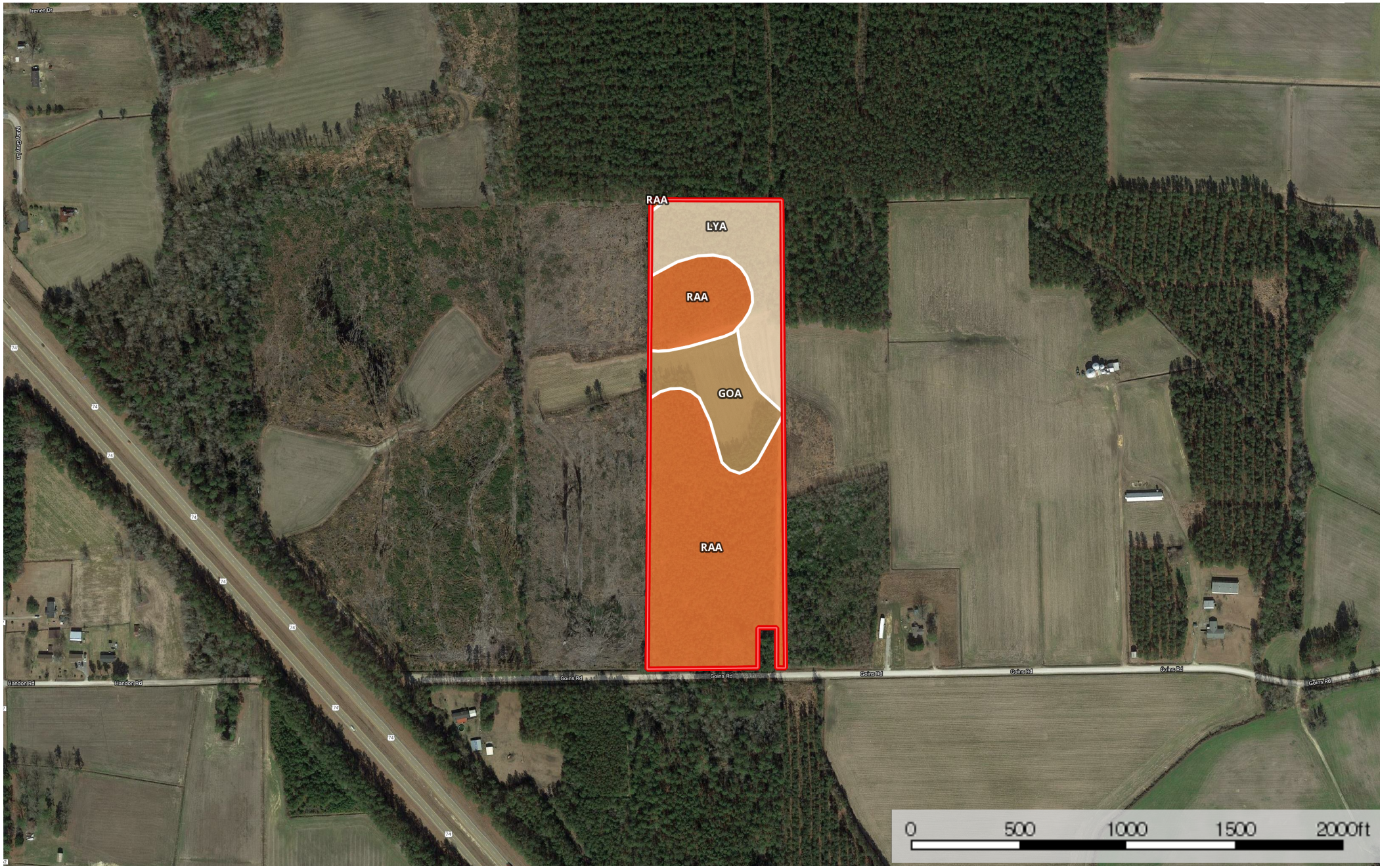



19.75 Hooks Columbus BC

Columbus County, North Carolina, 19.75 AC +/-



 Boundary

|  Boundary 20.9 ac

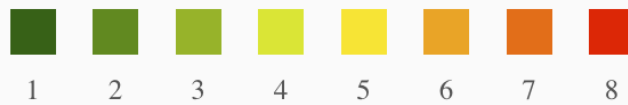
SOIL CODE	SOIL DESCRIPTION	ACRES	%	CAP
GoA	Goldsboro fine sandy loam, 0 to 2 percent slopes	3.1	14.73	2w
RaA	Rains fine sandy loam, 0 to 2 percent slopes, Southern Coastal Plain	13.5	64.42	4w
LyA	Lynchburg fine sandy loam, 0 to 2 percent slopes, Southern Coastal Plain	4.4	20.85	2w
TOTALS		20.9	100%	3.29

Capability Legend

Increased Limitations and Hazards

Decreased Adaptability and Freedom of Choice Users

Land, Capability



	1	2	3	4	5	6	7	8
'Wild Life'	•	•	•	•	•	•	•	•
Forestry	•	•	•	•	•	•	•	
Limited	•	•	•	•	•	•	•	
Moderate	•	•	•	•	•	•		
Intense	•	•	•	•	•			
Limited	•	•	•	•				
Moderate	•	•	•					
Intense	•	•						
Very Intense	•							

Grazing Cultivation

(c) climatic limitations (e) susceptibility to erosion

(s) soil limitations within the rooting zone (w) excess of water