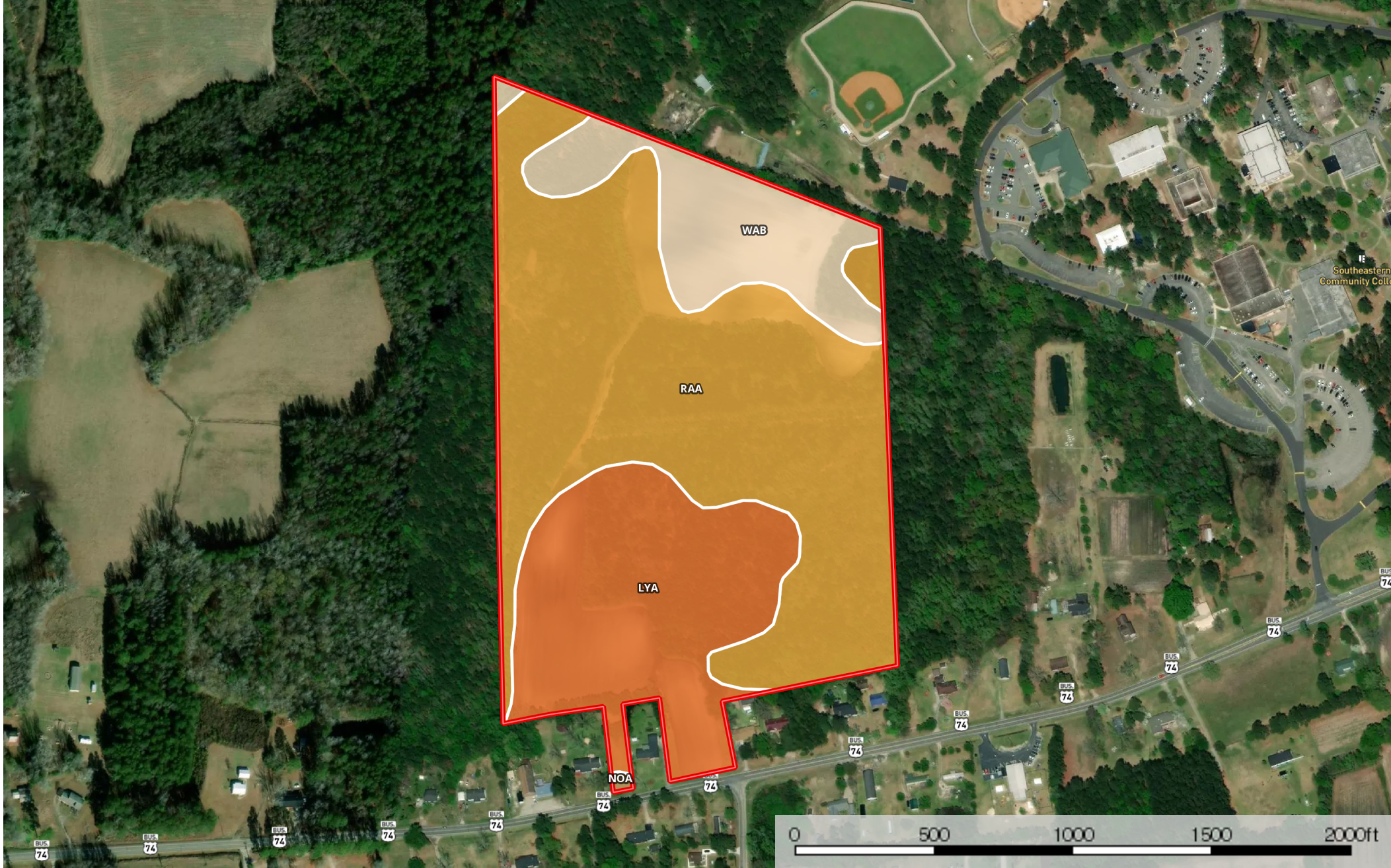


**+/- 44.32 ac Lanier Columbus KR**  
Columbus County, North Carolina, 44.32 AC +/-



Boundary



| 44.4 ac









SOIL CODE	SOIL DESCRIPTION	ACRES	%	CAP
NoA	Norfolk loamy fine sand, 0 to 2 percent slopes	0.1	0.16	1
LyA	Lynchburg fine sandy loam, 0 to 2 percent slopes, Southern Coastal Plain	12.2	27.45	2w
WaB	Wagram loamy fine sand, 0 to 6 percent slopes	6.5	14.7	2s
RaA	Rains fine sandy loam, 0 to 2 percent slopes, Southern Coastal Plain	25.6	57.69	4w
TOTALS		44.4	100%	3.15

## Capability Legend

Increased Limitations and Hazards

Decreased Adaptability and Freedom of Choice Users

Land, Capability

								
	1	2	3	4	5	6	7	8
'Wild Life'	•	•	•	•	•	•	•	•
Forestry	•	•	•	•	•	•	•	
Limited	•	•	•	•	•	•	•	
Moderate	•	•	•	•	•	•		
Intense	•	•	•	•	•			
Limited	•	•	•	•				
Moderate	•	•	•					
Intense	•	•						
Very Intense	•							

## Grazing Cultivation

(c) climatic limitations (e) susceptibility to erosion

(s) soil limitations within the rooting zone (w) excess of water