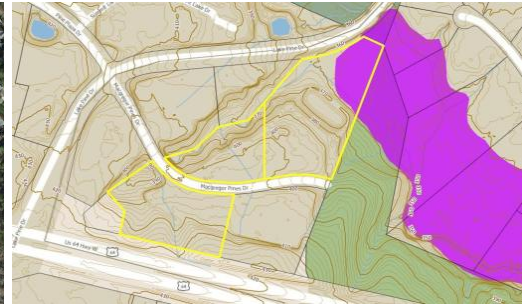


- Lot 4: 2.9 Acres
- Lot 6: 4.42 Acres
- Possible for Office, Medical, & Senior Housing
- Sales Price \$4,500,000



131,140, 1 MACGREGOR PINES, CARY, WAKE

ACTIVE

This listing has three separate lots available that must be sold together. All by the same seller. The lands part of Macgregor Centre PPD. Suitable for Office, Medical and potential dependent and independent senior care/housing. Excellent location off Hwy 64 near Apex Lake for hiking and retail adjacent. All utilities are available.

MORE DETAILS

Address:

131,140, 1 MacGregor Pines
Cary, NC 27511

County: Wake

GPS Location:

35.745142 x -78.817006

PRICE: \$4,500,000